



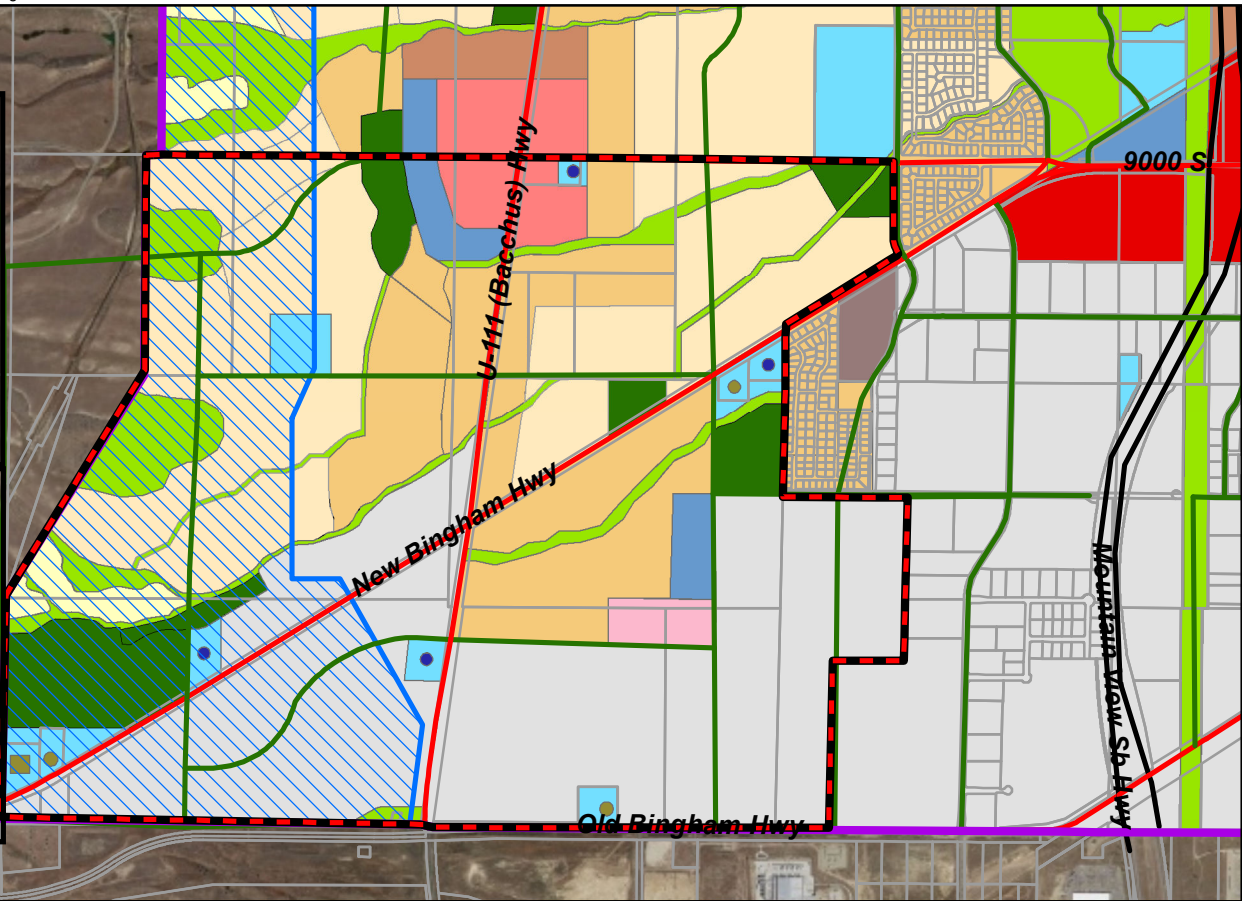
All Locations Approximate - NTS
Not For Use As Legal Property Description
or Engineering Design Purposes
Some Items Subject to Change Without Notice

Copyright West Jordan City
This map (T:\Planning & Zoning\Users Sub-Folders\Mark F)
Updated on May 16, 2017

City of West Jordan
Southwest Quadrant – Future Land Use Options

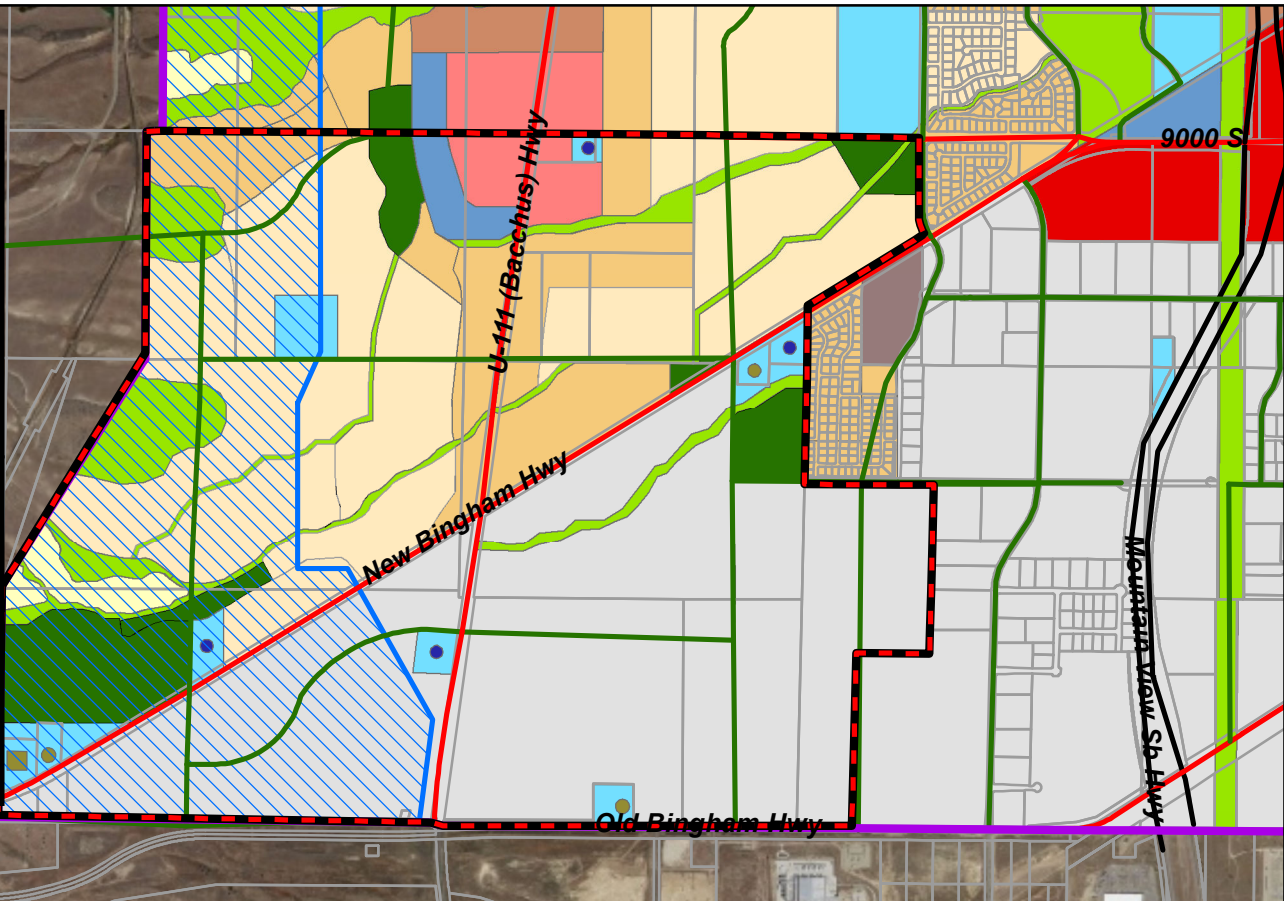
Option 1

Land Use Breakdown - Option 1		
Land Use Type	Acreage Within Study Area	Percentage of Study Area
Light Industrial	597.1	35%
Very Low Density Residential	21.0	1%
Low Density Residential	417.2	25%
Medium Density Residential	278.4	16%
High Density Residential	0.0	0%
Very High Density Residential	0.0	0%
Future Park	117.8	7%
Parks and Open Land	117.9	7%
Public Facilities	61.0	4%
Professional Office	31.7	2%
Regional Commercial	0.0	0%
Community Commercial	34.2	2%
Neighborhood Commercial	16.7	1%
Research Park	0.0	0%
Mixed Use	0.0	0%
Agricultural Open Space	0.0	0%
City Center/TSOD	0.0	0%
TOTAL	1692.8	100%
City-Wide Land Use Breakdown - Option 1		
Land Use Type	Acreage Within City Limits	Percentage of Study Area
Light Industrial	2373.4	11%
Very Low Density Residential	844.7	4%
Low Density Residential	2873.0	13%
Medium Density Residential	5935.4	28%
High Density Residential	2043.0	10%
Very High Density Residential	455.2	2%
Future Park	296.3	1%
Parks and Open Land	2229.0	10%
Public Facilities	1837.3	9%
Professional Office	334.2	2%
Regional Commercial	360.5	2%
Community Commercial	767.4	4%
Neighborhood Commercial	186.7	1%
Research Park	385.1	2%
Mixed Use	40.7	0%
Agricultural Open Space	167.8	1%
City Center/TSOD	260.8	1%
TOTAL	21390.3	100%



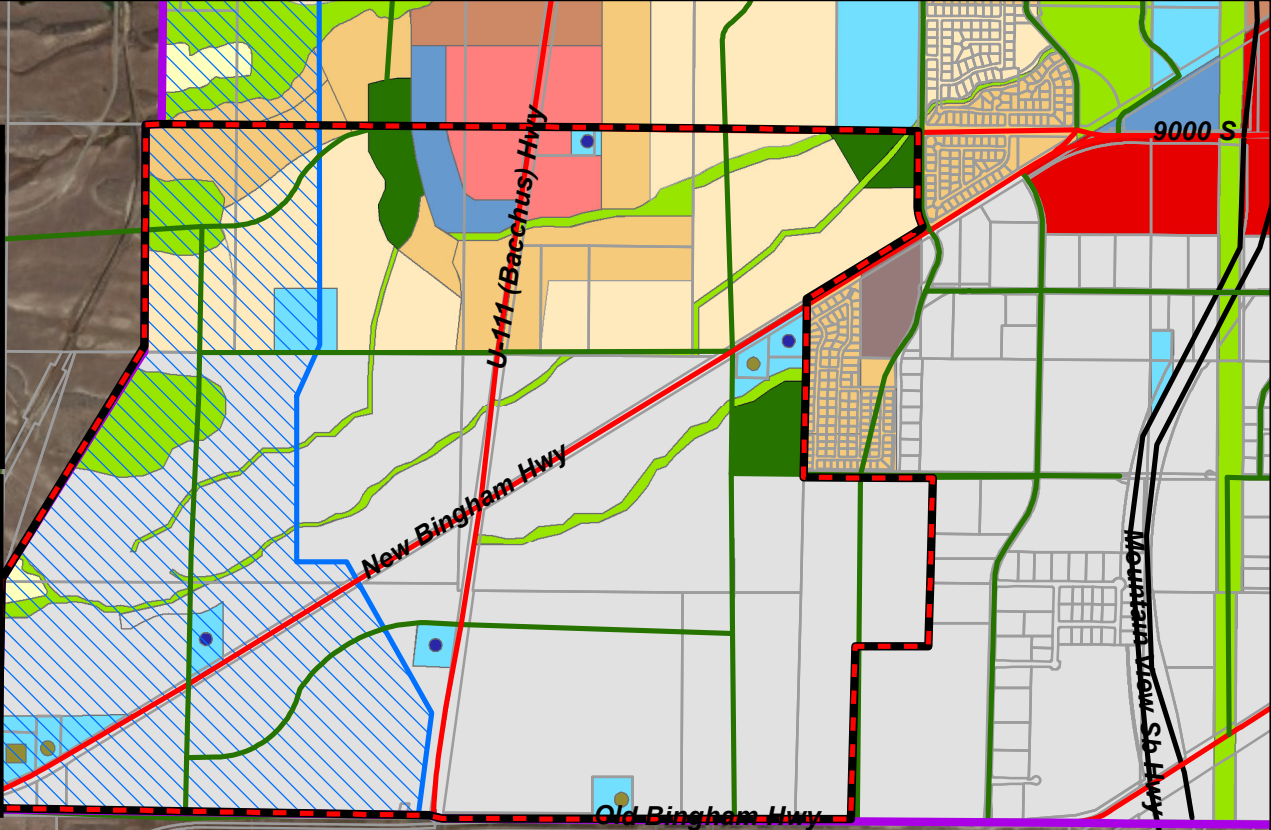
Option 2

Land Use Breakdown - Option 2		
Land Use Type	Acreage Within Study Area	Percentage of Study Area
Light Industrial	690.1	41%
Very Low Density Residential	21.0	1%
Low Density Residential	468.5	28%
Medium Density Residential	176.3	10%
High Density Residential	0.0	0%
Very High Density Residential	0.0	0%
Future Park	112.8	7%
Parks and Open Land	112.1	7%
Public Facilities	60.7	4%
Professional Office	17.1	1%
Regional Commercial	0.0	0%
Community Commercial	34.2	2%
Neighborhood Commercial	0.0	0%
Research Park	0.0	0%
Mixed Use	0.0	0%
Agricultural Open Space	0.0	0%
City Center/TSOD	0.0	0%
TOTAL	1692.7	100%
City-Wide Land Use Breakdown - Option 2		
Land Use Type	Acreage Within City Limits	Percentage of Study Area
Light Industrial	2466.1	12%
Very Low Density Residential	844.7	4%
Low Density Residential	2908.1	14%
Medium Density Residential	5849.0	27%
High Density Residential	2043.0	10%
Very High Density Residential	455.2	2%
Future Park	291.3	1%
Parks and Open Land	2221.1	10%
Public Facilities	1838.5	9%
Professional Office	319.6	1%
Regional Commercial	360.5	2%
Community Commercial	767.4	4%
Neighborhood Commercial	173.0	1%
Research Park	385.1	2%
Mixed Use	40.7	0%
Agricultural Open Space	167.8	1%
City Center/TSOD	260.8	1%
TOTAL	21393.8	100%



Option 3

Land Use Breakdown - Option 3		
Land Use Type	Acreage Within Study Area	Percentage of Study Area
Light Industrial	1059.3	63%
Very Low Density Residential	0.0	0%
Low Density Residential	258.8	15%
Medium Density Residential	110.0	7%
High Density Residential	0.0	0%
Very High Density Residential	0.0	0%
Future Park	43.9	3%
Parks and Open Land	103.8	6%
Public Facilities	60.9	4%
Professional Office	17.1	1%
Regional Commercial	0.0	0%
Community Commercial	34.2	2%
Neighborhood Commercial	0.0	0%
Research Park	0.0	0%
Mixed Use	0.0	0%
Agricultural Open Space	0.0	0%
City Center/TSOD	0.0	0%
TOTAL	1692.0	100%
City-Wide Land Use Breakdown - Option 3		
Land Use Type	Acreage Within City Limits	Percentage of Study Area
Light Industrial	3635.4	17%
Very Low Density Residential	827.7	4%
Low Density Residential	2698.4	13%
Medium Density Residential	5782.8	27%
High Density Residential	2043.0	10%
Very High Density Residential	455.2	2%
Future Park	222.4	1%
Parks and Open Land	2214.8	10%
Public Facilities	1838.6	9%
Professional Office	319.6	1%
Regional Commercial	360.5	2%
Community Commercial	767.4	4%
Neighborhood Commercial	173.0	1%
Research Park	385.1	2%
Mixed Use	40.7	0%
Agricultural Open Space	167.8	1%
City Center/TSOD	260.8	1%
TOTAL	21393.1	100%



Option 4

Land Use Breakdown - Option 4		
Land Use Type	Acreage Within Study Area	Percentage of Study Area
Light Industrial	1270.5	75%
Very Low Density Residential	4.0	0%
Low Density Residential	141.2	8%
Medium Density Residential	29.0	2%
High Density Residential	0.0	0%
Very High Density Residential	0.0	0%
Future Park	29.9	2%
Parks and Open Land	105.1	6%
Public Facilities	60.9	4%
Professional Office	17.1	1%
Regional Commercial	0.0	0%
Community Commercial	34.2	2%
Neighborhood Commercial	0.0	0%
Research Park	0.0	0%
Mixed Use	0.0	0%
Agricultural Open Space	0.0	0%
City Center/TSOD	0.0	0%
TOTAL	1691.9	100%
City-Wide Land Use Breakdown - Option 4		
Land Use Type	Acreage Within City Limits	Percentage of Study Area
Light Industrial	3046.6	14%
Very Low Density Residential	827.7	4%
Low Density Residential	2580.8	12%
Medium Density Residential	5701.8	27%
High Density Residential	2043.0	10%
Very High Density Residential	455.2	2%
Future Park	208.4	1%
Parks and Open Land	2216.1	10%
Public Facilities	1838.6	9%
Professional Office	319.6	1%
Regional Commercial	360.5	2%
Community Commercial	767.4	4%
Neighborhood Commercial	173.0	1%
Research Park	385.1	2%
Mixed Use	40.7	0%
Agricultural Open Space	167.8	1%
City Center/TSOD	260.8	1%
TOTAL	21393.1	100%

