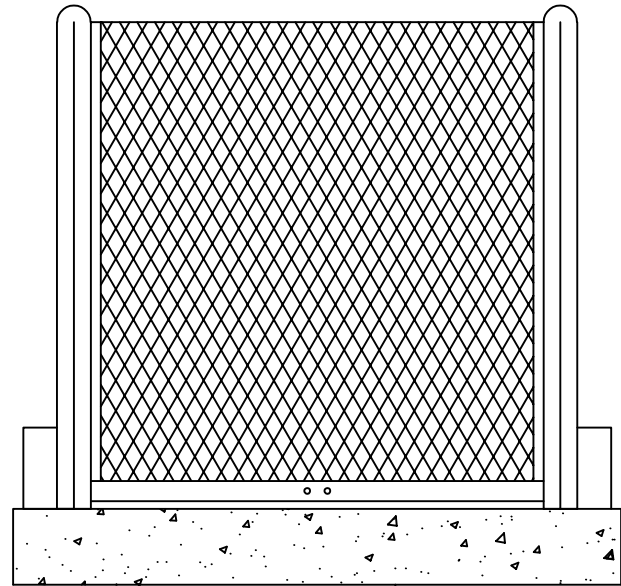
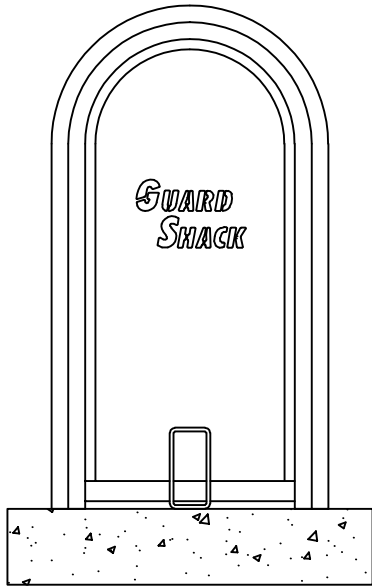


## STANDARD GUARDSHACK™ ENCLOSURES



### STANDARD GUARDSHACK™ AND COAST GUARDSHACK™ SIZES INTERNAL DIMENSIONS

GS - 3	10" W x 24" H x 40" L	HINGED
GS - 4	16" W x 30" H x 46" L	HINGED

For 304 S. S. , order as CGS using same model #

### STANDARD GUARDSHACK™ AND COAST GUARDSHACK™ SIZES INTERNAL DIMENSIONS

GS - .5	10" W x 18" H x 12" L	Lift-Off
GS - 1	10" W x 24" H x 22" L	Lift-Off
GS - 2	10" W x 24" H x 30" L	Lift-Off
GS - 3.3	16" W x 30" H x 30" L	Lift-Off

For 304 S. S. , order as CGS using same model #

### GUARDSHACK™ GENERAL SPECIFICATIONS

- All pipe shall be 1-1/4" schedule 40 A.S.T.M. A-53 Grade A- Electric Weld pipe.
- Angle Iron shall be 1" x 1" x 1/8" steel.
- Expanded metal shall be 1/2" spacing x #13 Ga. flattened diamond pattern steel.
- All stainless steel shall be sandblasted after fabrication to remove burrs, flashing and sharp edges.
- There shall be no exposed ends of expanded metal on the outside of the enclosure.
- Welding shall be a minimum of 1/4" long welds on 4" spacing.
- Standard Lock Shield Brackets shall be welded on each end of lift off enclosures.
- Hardware kits provided for mounting enclosures.
- On 304 S.S. units, all hinges, exposed hardware, and brackets shall be 304 S.S.
- All hardware shall be securely attached to enclosures. See HK-100 for hardware specifications.
- All enclosures shall withstand a minimum of 200 lbs. per square foot without any permanent deflection or distortion.
- 3/8" spacing between angle iron framework of enclosure and slab to prevent rusting. Only pipe ends to touch slab.

### POWDERCOATED UNITS

#### Pre-powdercoat Treatment Process

Clean GuardShack™ unit with a S-44 alkaline cleaner, overflow rinse, apply an AC-8115 iron phosphate treatment, overflow rinse and finish with a #198 sealer rinse to prevent rusting and improve adhesion.

#### Powdercoat Treatment Process

Units shall be preheated and coated by electrostatic application of 2.0 to 3.5 mil thickness on all surfaces. Powder shall be RAL 1019 Woodlands Tan or TCI 8810-6058 Forest Green or approved equal Impact Resistance Finish 160 inch pounds direct 160 inch pounds reverse, per ASTM D-2794 specs. Gloss Finish >85, per ASTM D-523. Adhesion to be rated excellent when tested to ASTM D-3359 standards.

DRAWING UPDATED JULY 2019

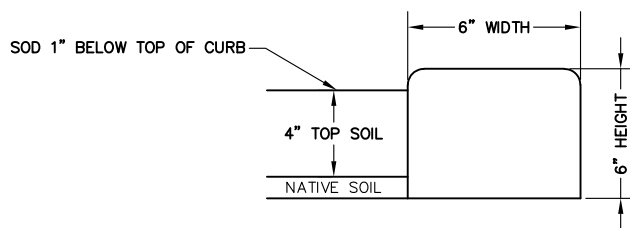
City of West Jordan, Utah

1 OF 1



## BACKFLOW ENCLOSURES (GUARDSHACK HINGED ENCLOSURE)

PLAN  
PK-005



DRAWING UPDATED JULY 2019



City of West Jordan, Utah

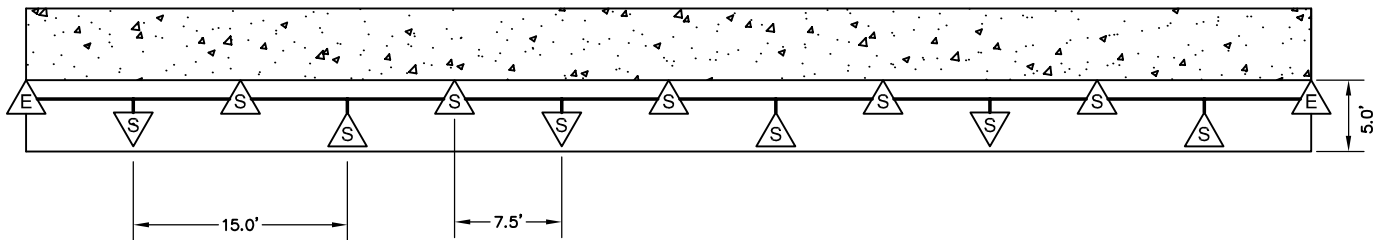
1 OF 1



## CURBING

PLAN  
PK-010

-  NEW RAINBIRD EST-PC POP-UP SPRAY HEAD
-  NEW RAINBIRD SST-PC POP-UP SPRAY HEAD



NOTES:

1. HEADS ALTERNATING TO FORM TRIANGLE SPACING
2. DRAWING NOT TO SCALE
3. MAIN LINE AND LATERALS ARE TO BE LOCATED ON SIDEWALK SIDE OF PARKSTRIP

DRAWING UPDATED JULY 2019

City of West Jordan, Utah

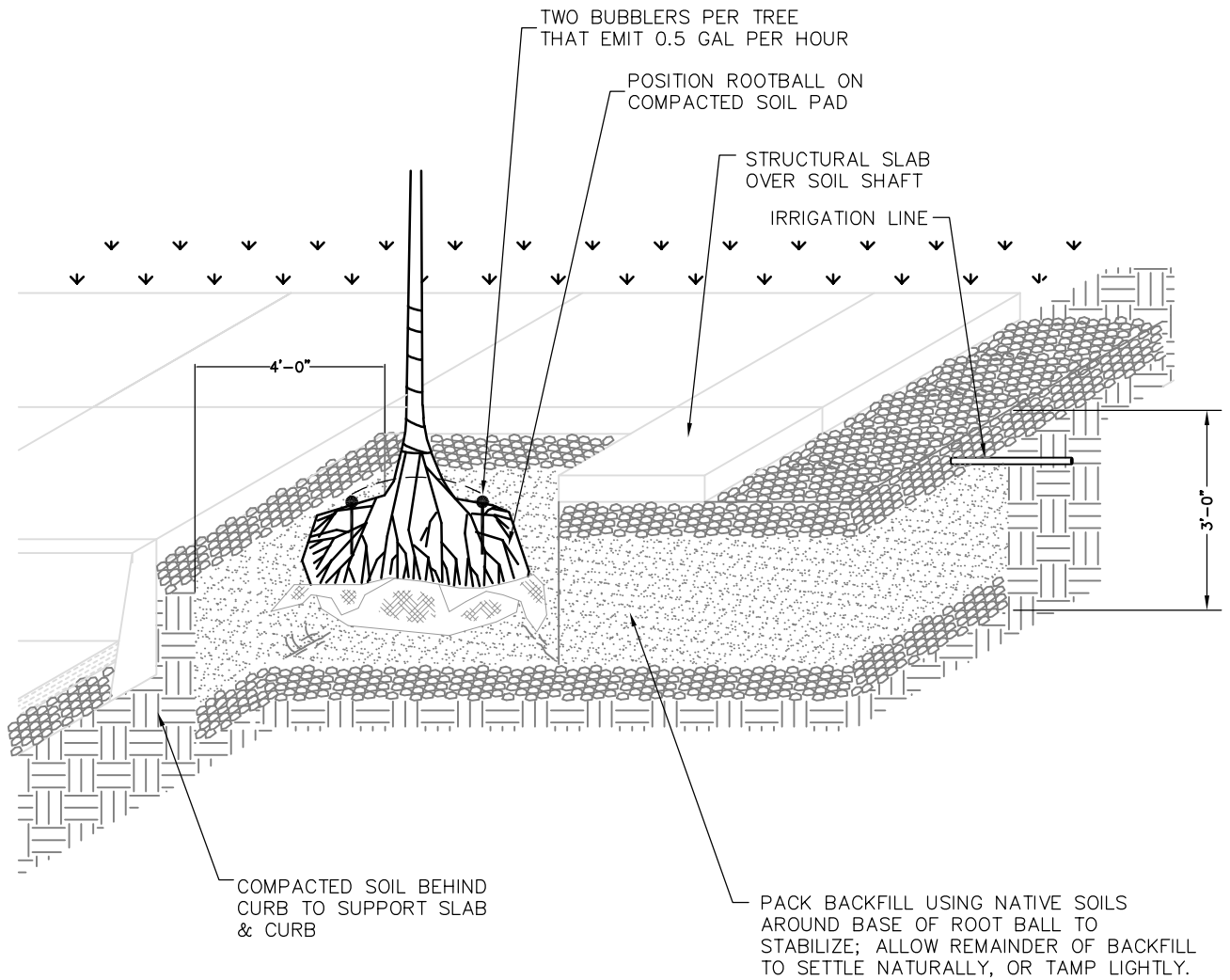
1 OF 1



# TYPICAL STREETSCAPE HEAD PATTERN

PLAN

PK-015



DRAWING UPDATED JULY 2019

City of West Jordan, Utah

1 OF 1

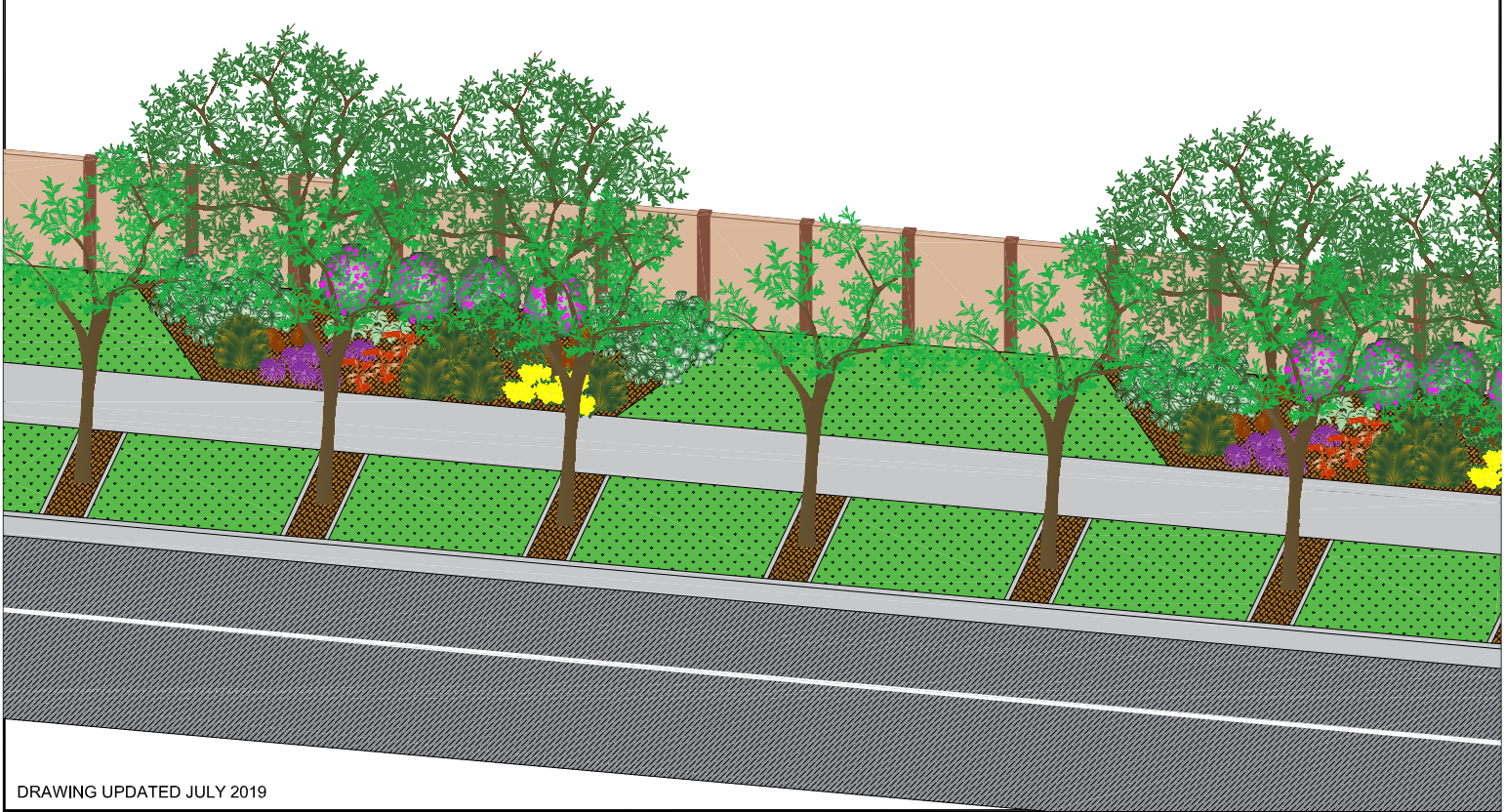
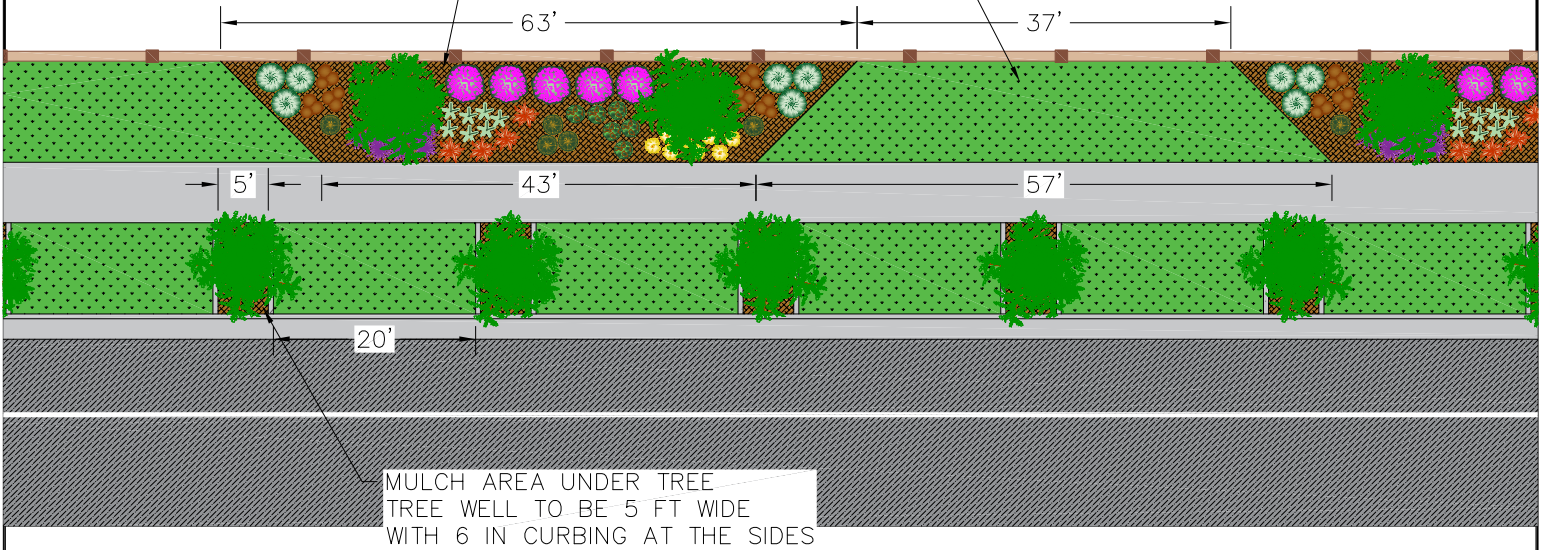


# STREETSCAPE PLANTING CROSS SECTION

PLAN  
PK-020

MULCH AREA 530 SF  
WITH A VARIETY OF DIFFERENT PLANTINGS  
TO BE DETERMINED AT TIME OF REVIEW

SOD AREA 470 SF



DRAWING UPDATED JULY 2019

City of West Jordan, Utah

1 OF 1

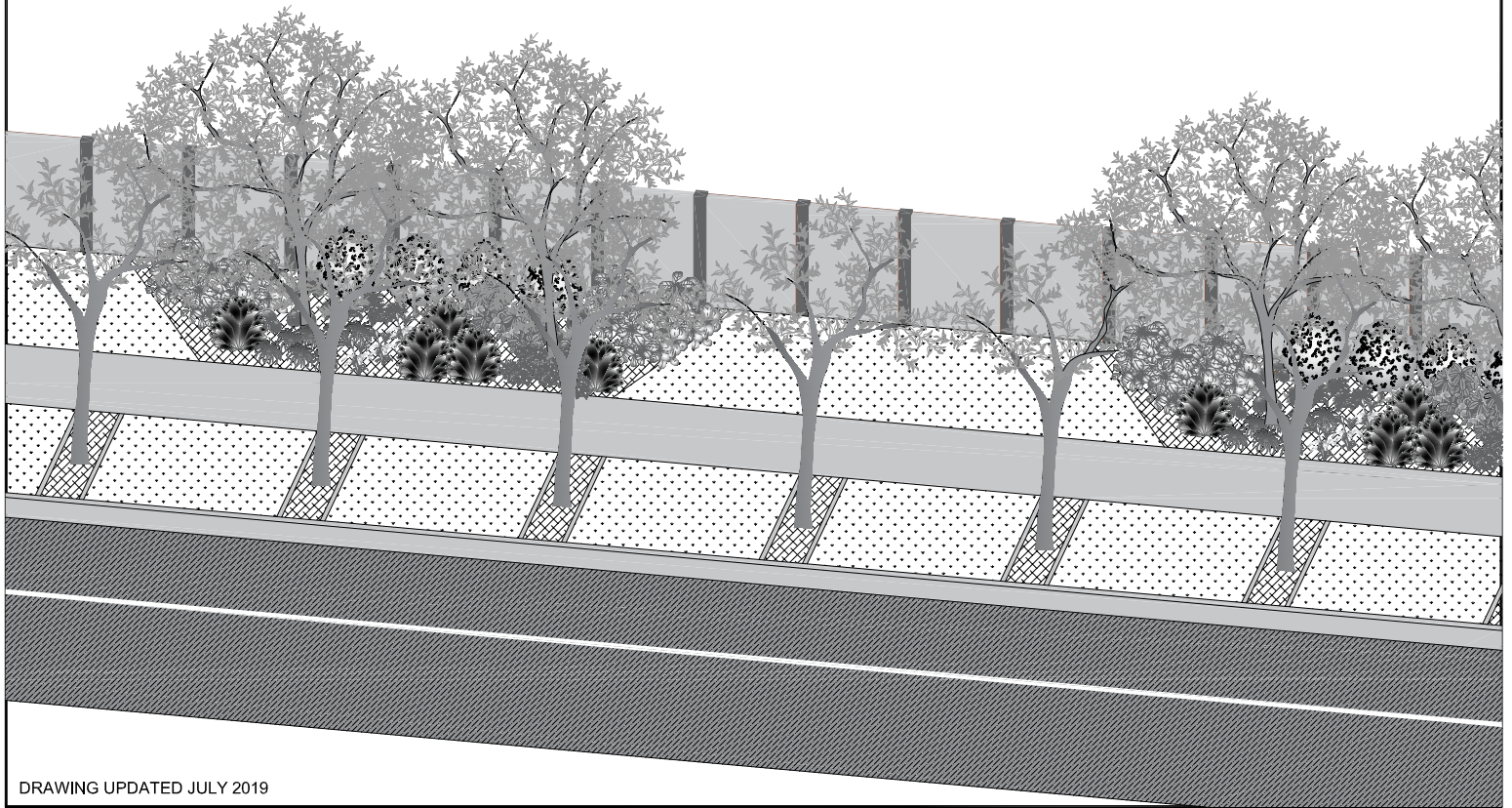
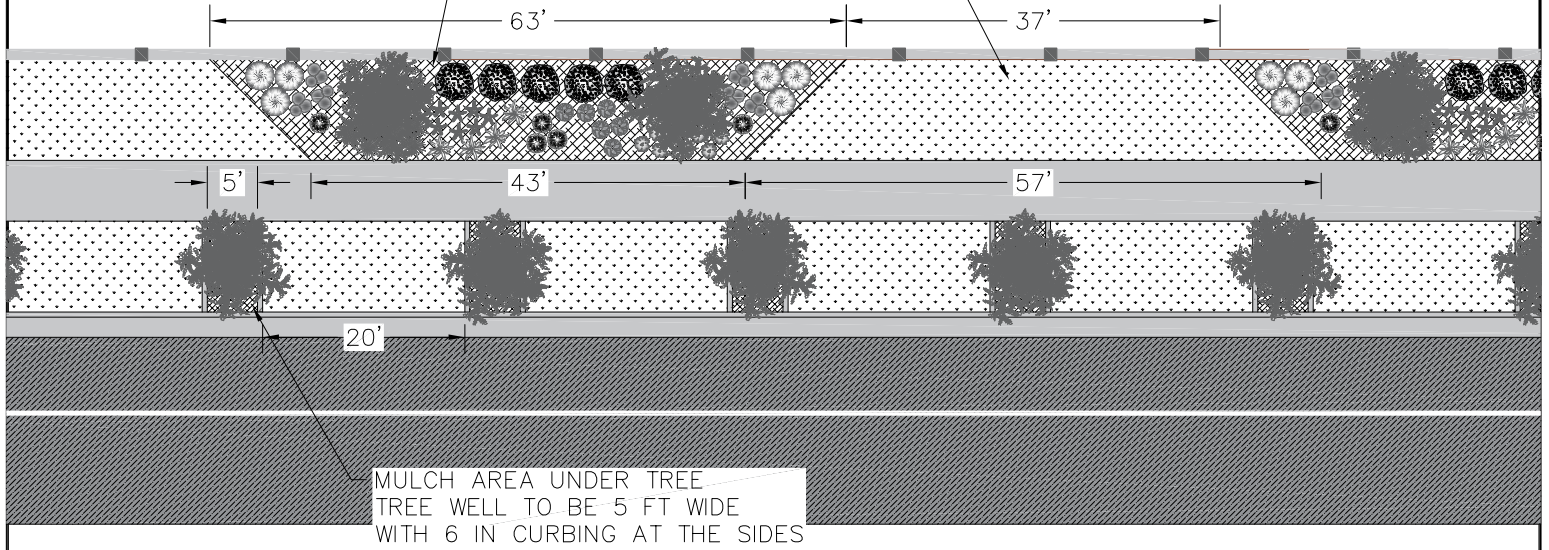


# PARKSTRIP "A" DETAIL

PLAN  
PK-025

MULCH AREA 530 SF  
WITH A VARIETY OF DIFFERENT PLANTINGS  
TO BE DETERMINED AT TIME OF REVIEW

SOD AREA 470 SF



DRAWING UPDATED JULY 2019

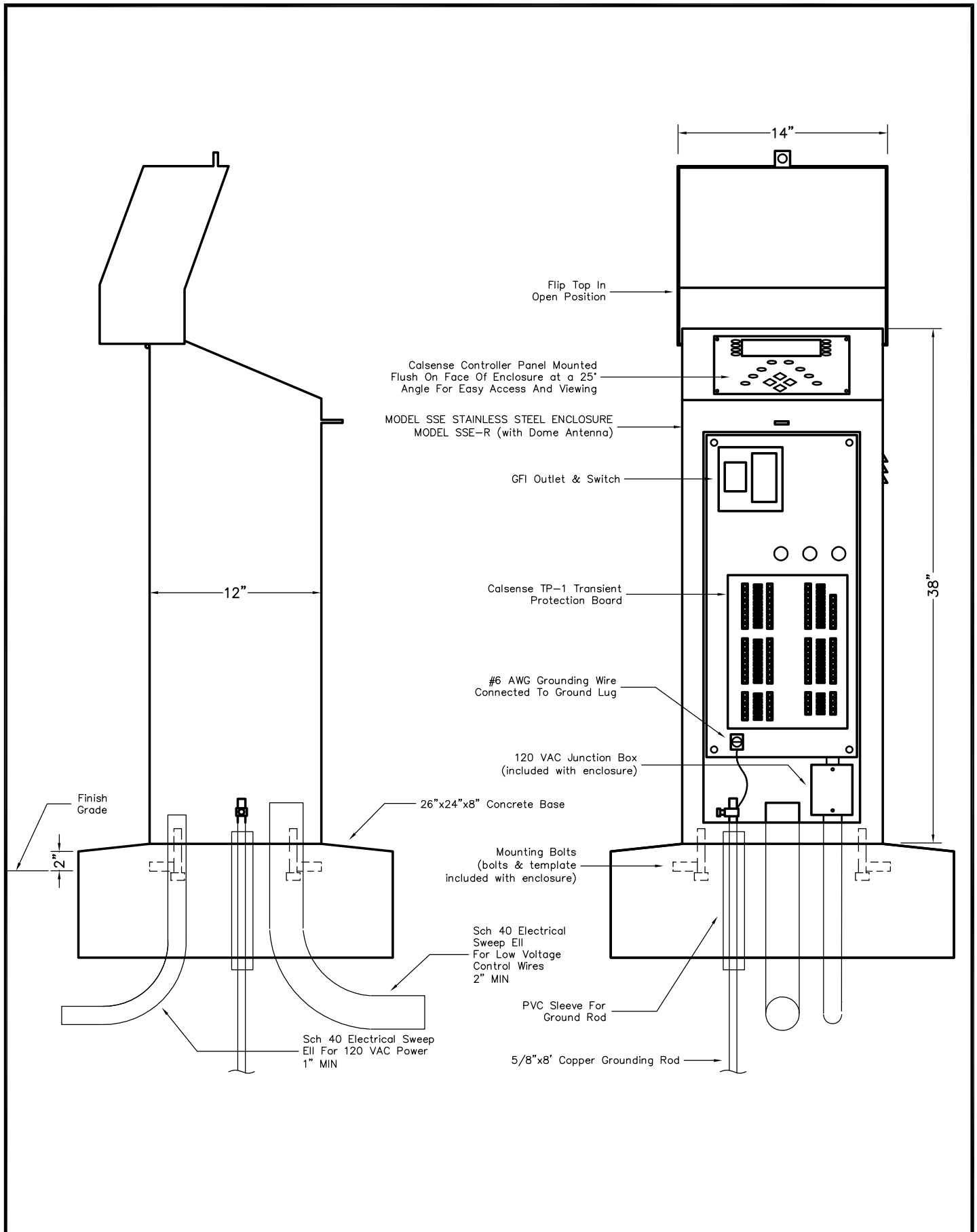
City of West Jordan, Utah

1 OF 1



## PARKSTRIP "A" DETAIL

PLAN  
PK-025



DRAWING UPDATED JULY 2019



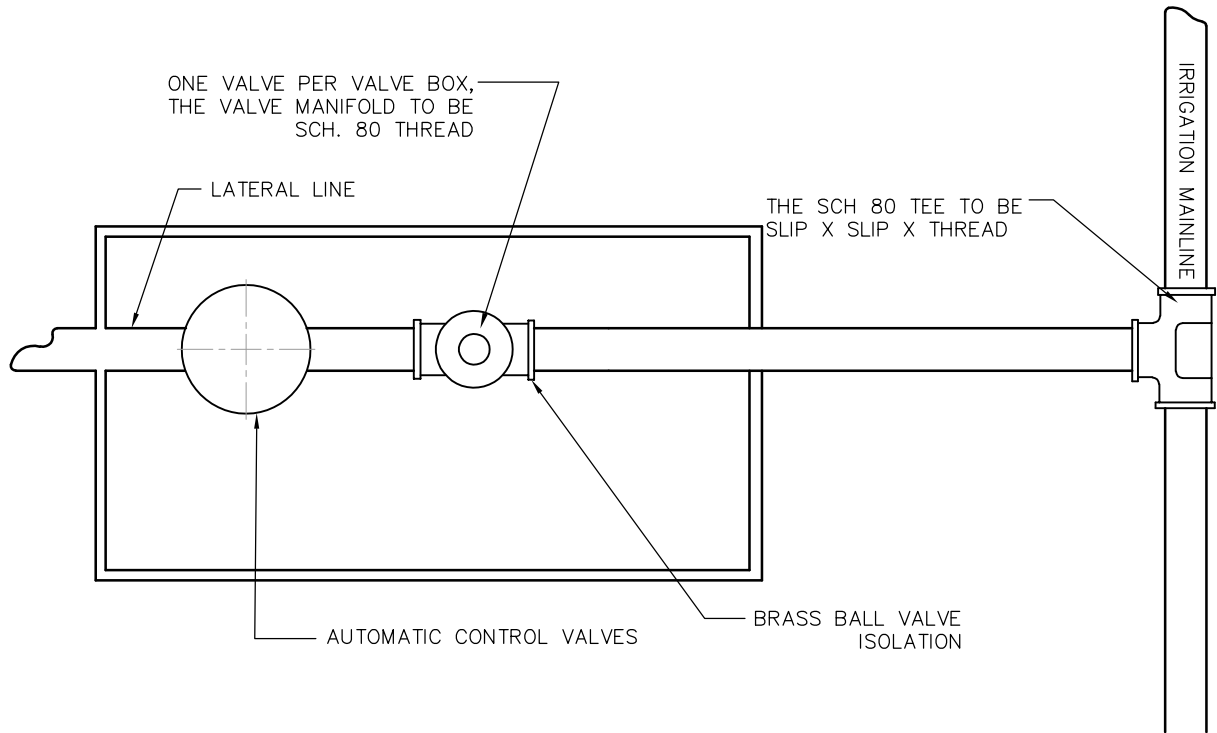
City of West Jordan, Utah

1 OF 1



# PED. MOUNT CONTROLLER (CALSENSE PRE-ASSEMBLED ENCLOSURE INSTALLATION DETAIL)

PLAN  
PK-045



THE VALVE MANIFOLD WILL BE BUILT AS FOLLOWS;  
 ALL THREAD FROM MAIN LINE, ALL SCH. 80 PIPE,  
 BRASS BALL VALVE, CLOSE NIPPLE, SCH 80 UNION,  
 CLOSE NIPPLE, PEB VALVE, CLOSE NIPPLE, SCH. 80  
 UNION, TOE NIPPLE MIN. 4" WITH A SCH 80 COUPLING,  
 ALL TO FIT IN ONE VALVE BOX. (SEE DETAIL PK-060)

EACH AUTOMATIC CONTROL VALVE NEEDS TO HAVE ITS  
 OWN ISOLATION VALVE (BRASS BALL VALVE)

DRAWING UPDATED JULY 2019

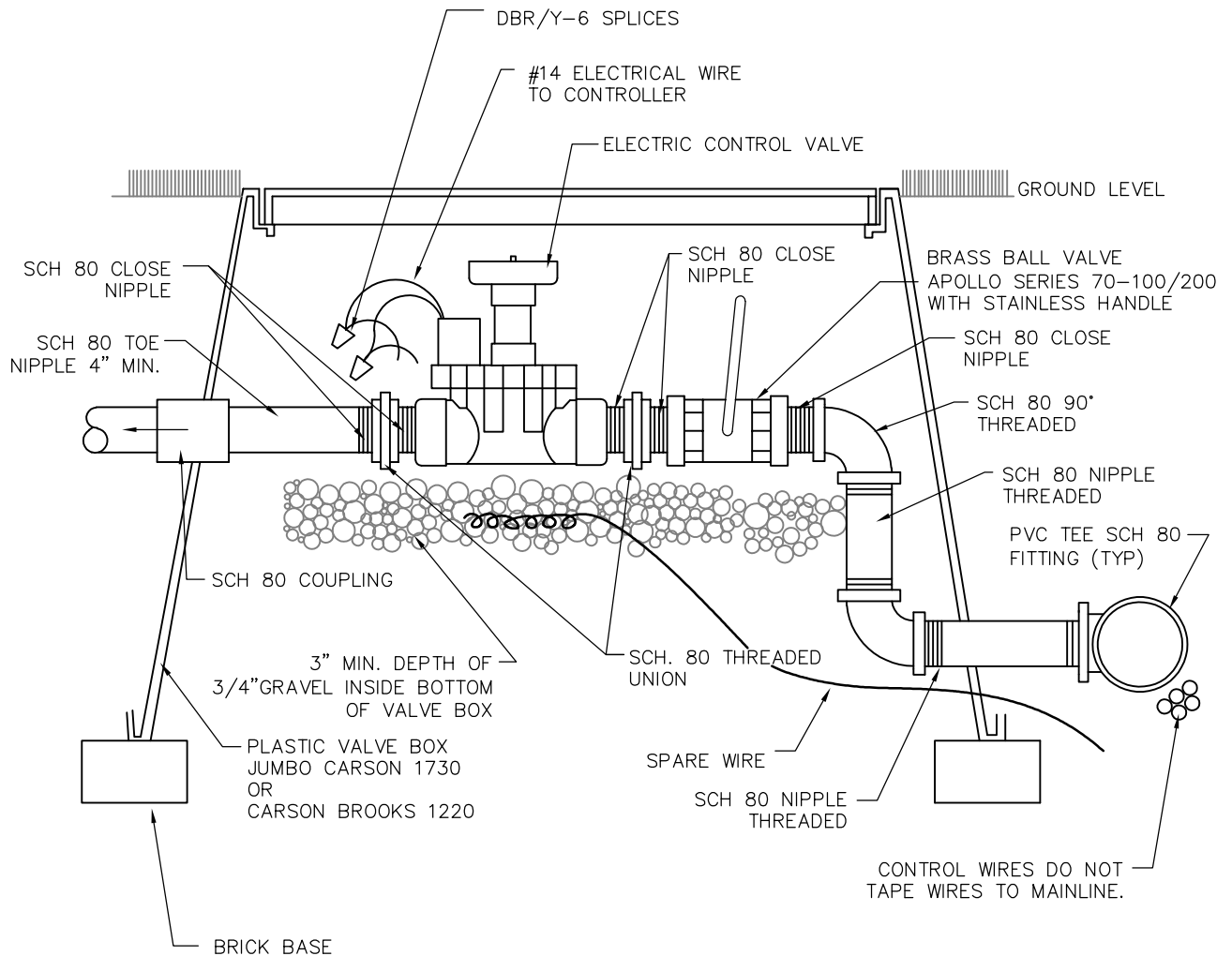
City of West Jordan, Utah

1 OF 1



## VALVE ASSEMBLY

PLAN  
**PK-055**



EACH AUTOMATIC CONTROL VALVE NEEDS TO HAVE ITS OWN ISOLATION VALVE (BRASS BALL VALVE)

DRAWING UPDATED JULY 2019

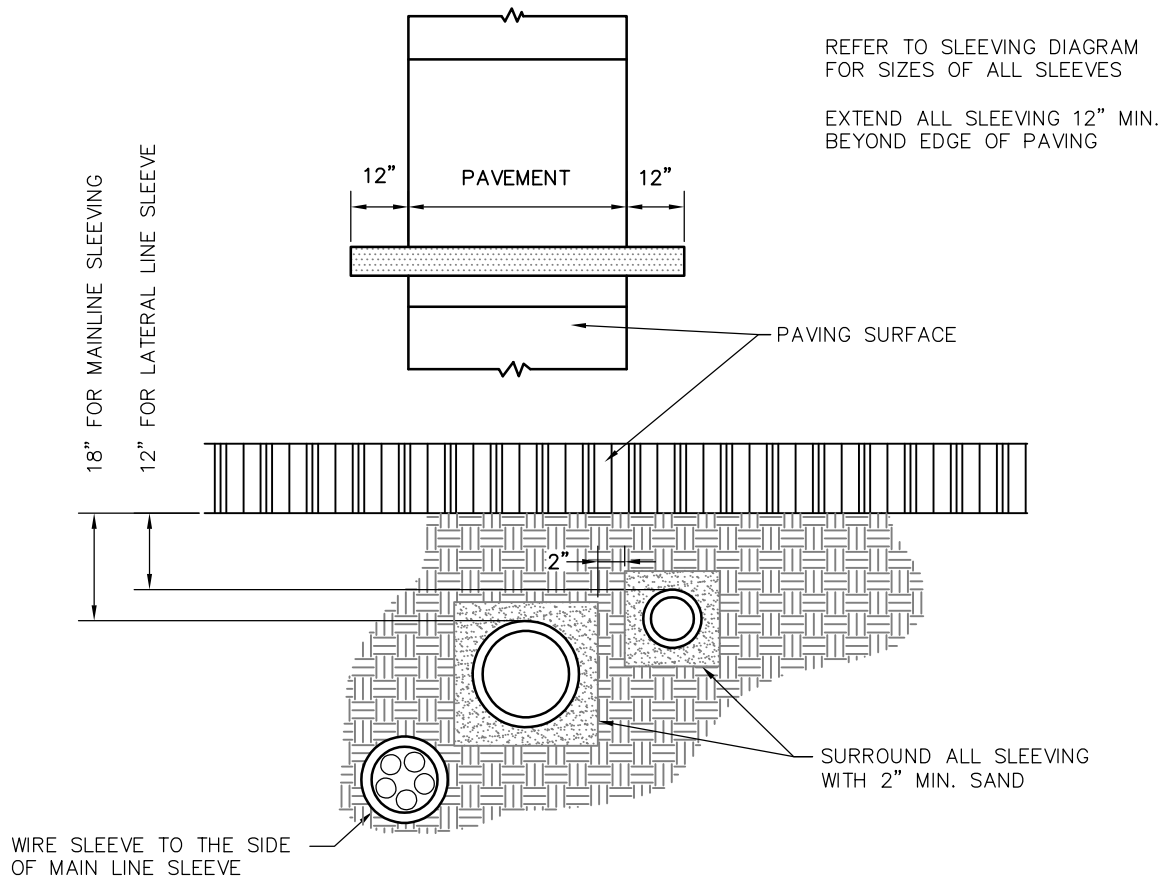
City of West Jordan, Utah

1 OF 1



# VALVE ASSEMBLY

PLAN  
PK-060



SLEEVE SIZE CHART

PIPE SIZE	MIN. SLEEVE SIZE
3/4"	1 1/2"
1"	2"
1 1/4"	2 1/2"
1 1/2"	3"
2"	4"
2 1/2"	6"
3"	6"
4"	8"
6"	12"

WHEN MULTIPLE PIPES OCCUR IN ONE TRENCH, ADD REQUIRED SLEEVE SIZES TOGETHER FOR 1 SIZE

WIRES SHALL BE IN SEPARATE CONDUIT AS PER CHART BELOW

WIRE CONDUIT SIZES

NUMBER OF WIRES	MIN. CONDUIT SIZE
1-4	3/4"
5-7	1"
8-11	1 1/2"
12-22	2"
23-31	2 1/2"
32-36	3"

DRAWING UPDATED JULY 2019

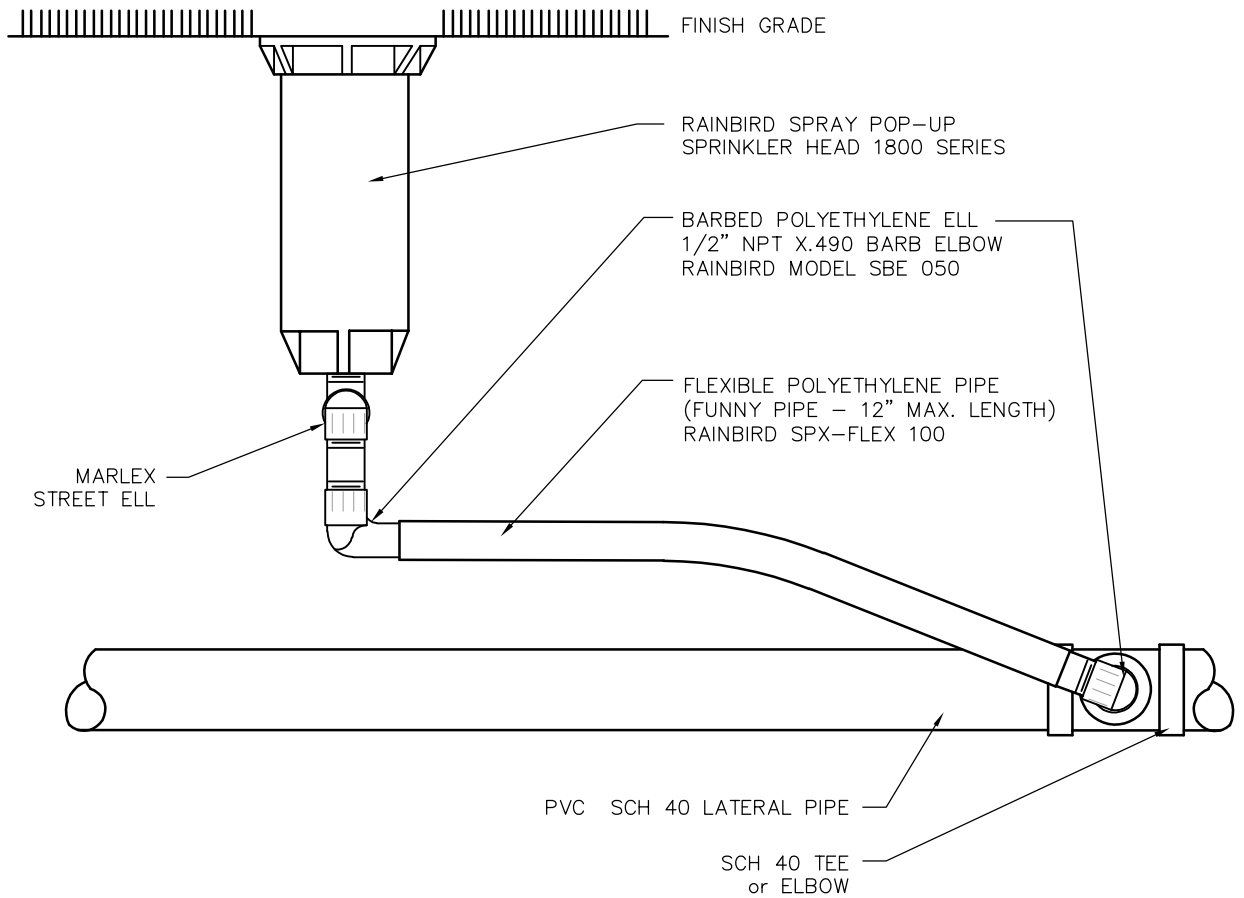
City of West Jordan, Utah

1 OF 1



SLEEVING

PLAN  
PK-065



DRAWING UPDATED JULY 2019

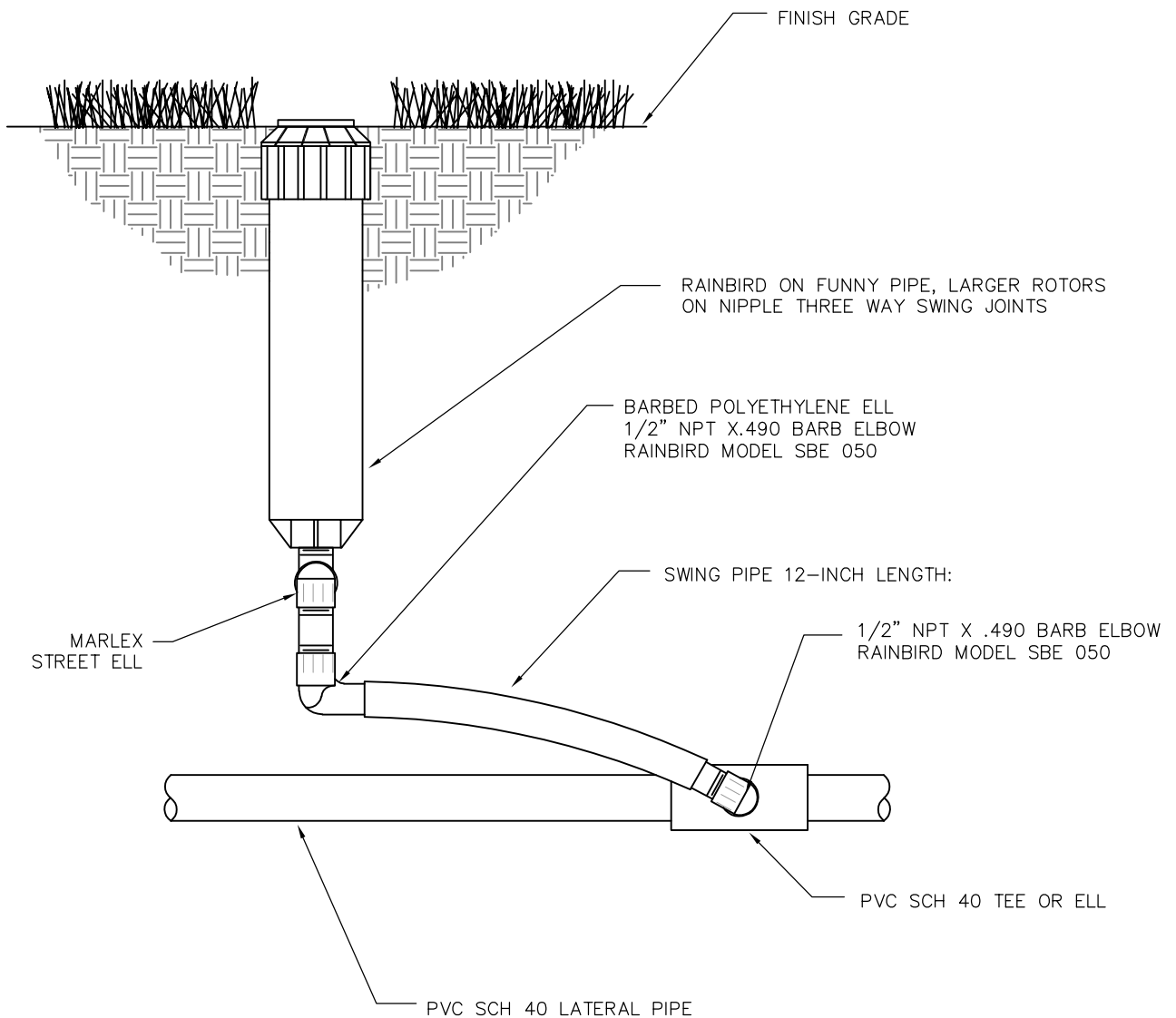
City of West Jordan, Utah

1 OF 1



SPRAY POP-UP

PLAN  
PK-070



**NOTE:**

FOR FLOWS ABOVE 4 GPM USE A SWING JOINT INSTEAD OF SWING PIPE OR SWING ASSEMBLY.

DRAWING UPDATED JULY 2019

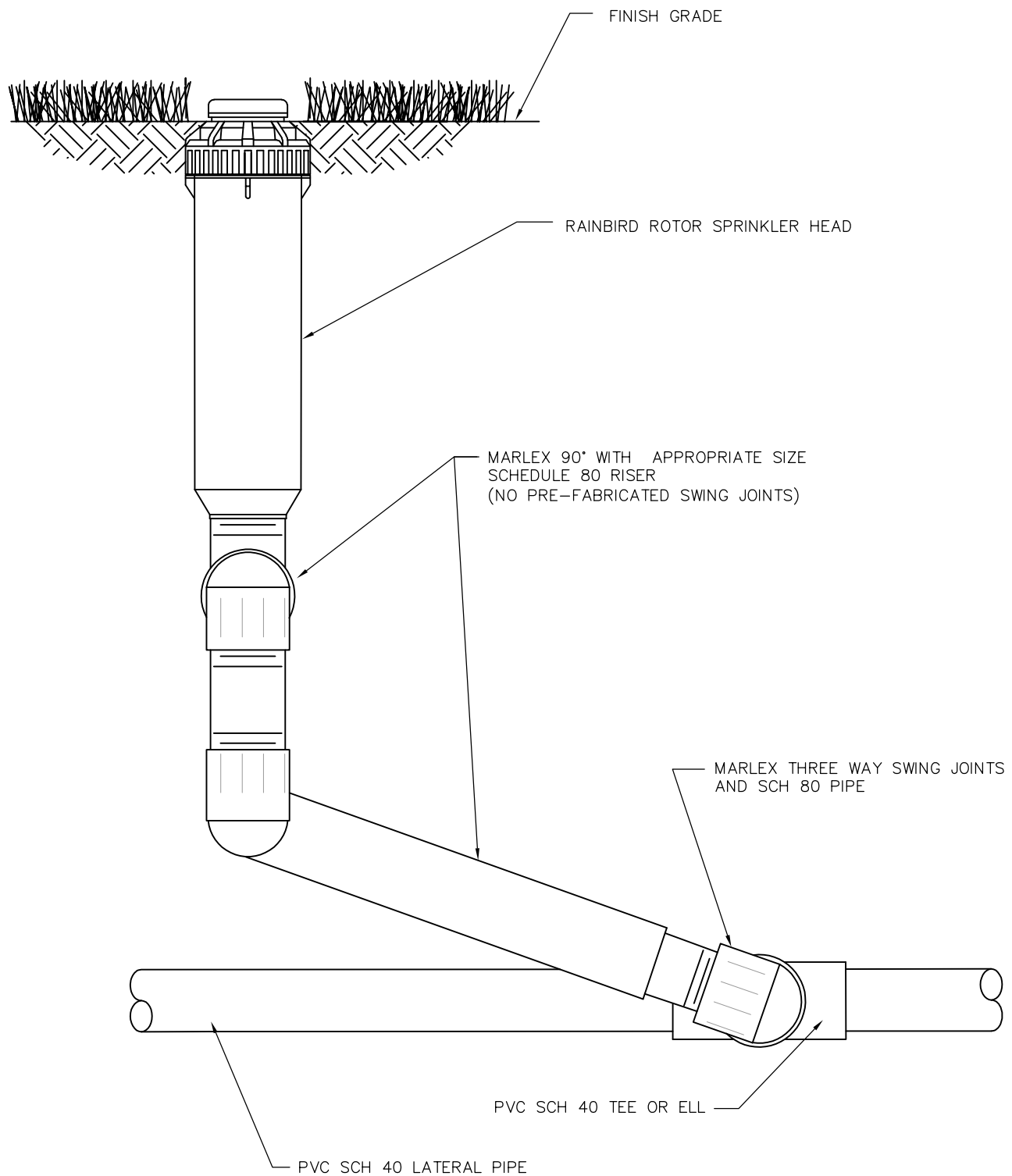
City of West Jordan, Utah

1 OF 1



# ROTOR POP-UP SPRINKLER

PLAN  
PK-075



DRAWING UPDATED JULY 2019

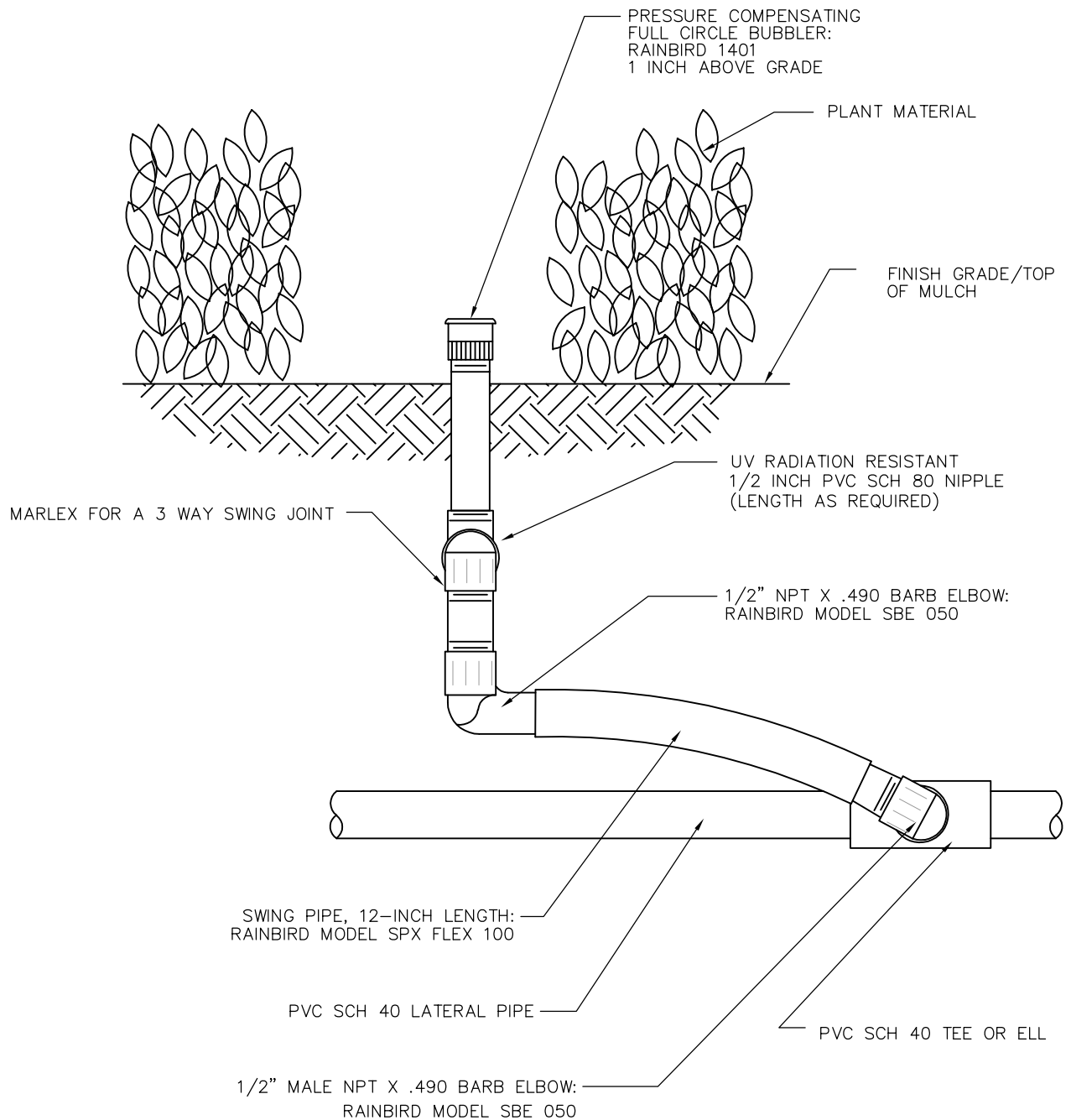
City of West Jordan, Utah

1 OF 1



# BIG ROTOR POP-UP SPRINKLER

PLAN  
PK-080



DRAWING UPDATED JULY 2019

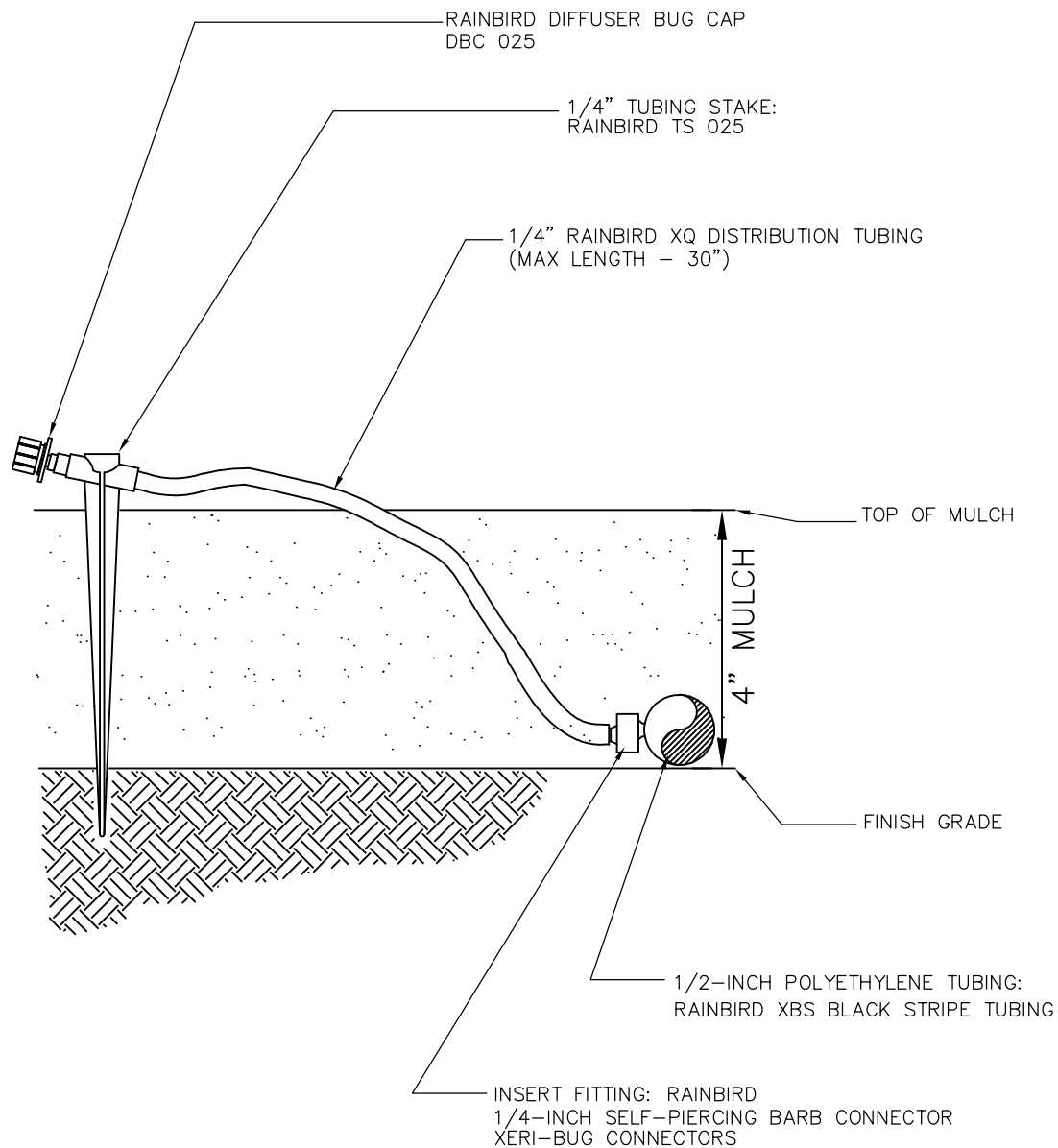
City of West Jordan, Utah

1 OF 1



PRESSURE COMPENSATING FULL-CIRCLE BUBBLER

PLAN  
PK-085



**NOTE:**

USE XERIMAN TOOL XM—TOOL TO INSERT CONNECTOR  
DIRECTLY INTO 1/2-INCH POLYETHYLENE TUBING.

DRAWING UPDATED JULY 2019

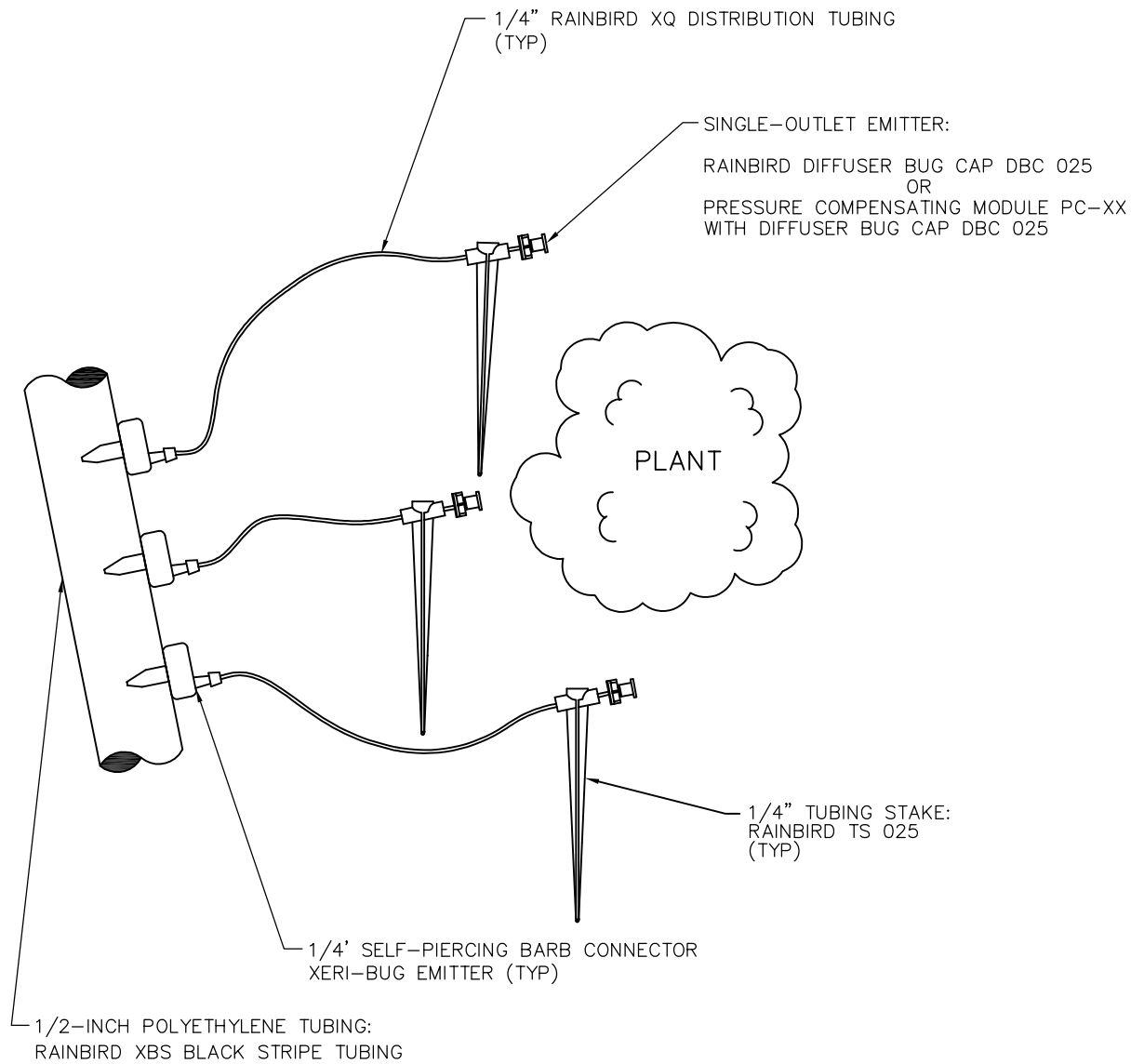
City of West Jordan, Utah

1 OF 1



# XERI-BUBBLER ON 1/4" TUBING

PLAN  
PK-090



NOTE:

USE XERIMAN TOOL XM-TOOL TO INSERT CONNECTOR  
DIRECTLY INTO 1/2-INCH POLYETHYLENE TUBING.

DRAWING UPDATED JULY 2019

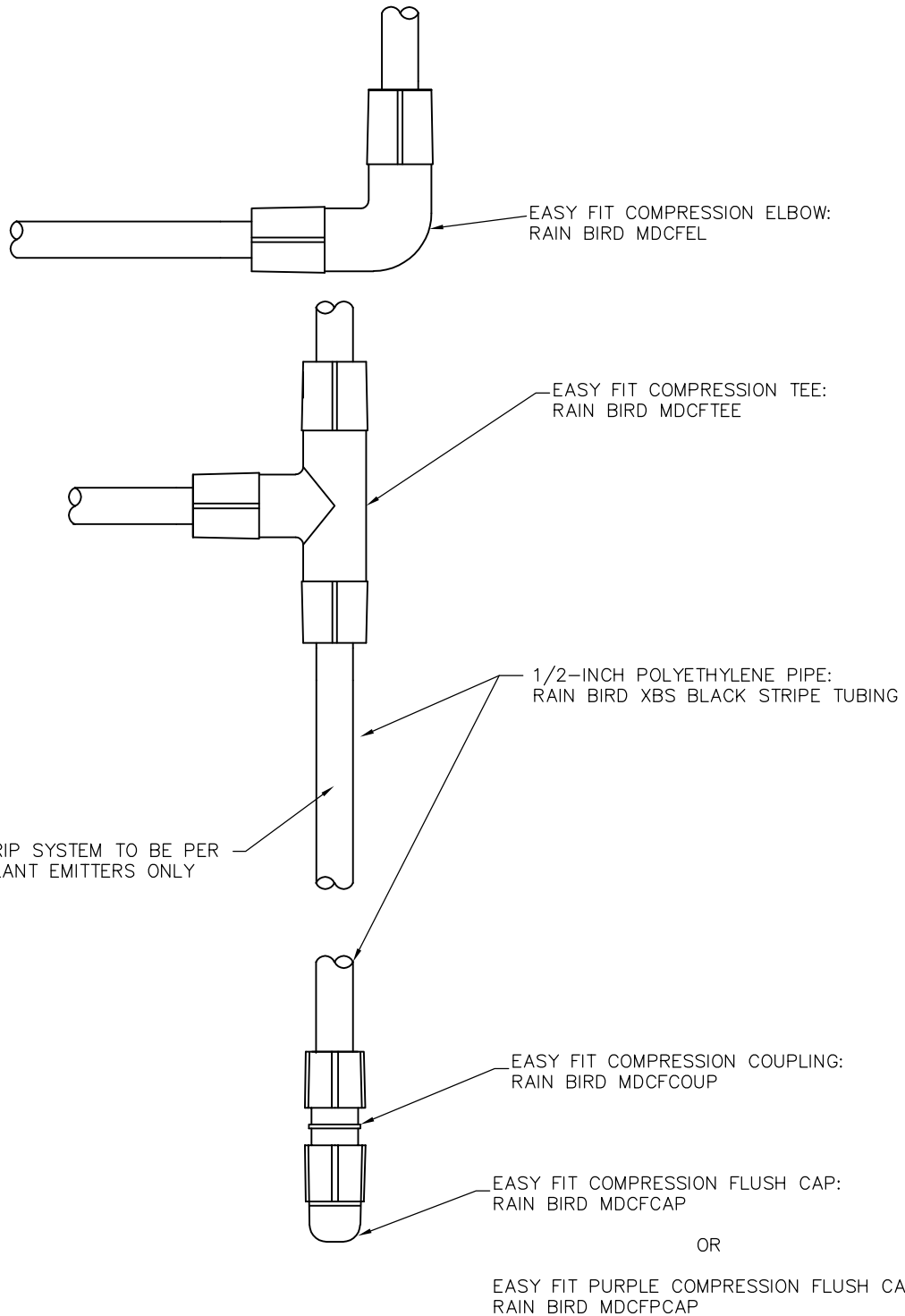
City of West Jordan, Utah

1 OF 1



# PLANT EMITTER INSTALLATION ON 1/4 INCH TUBING

PLAN  
PK-095



DRAWING UPDATED JULY 2019

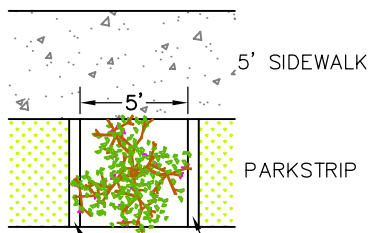
City of West Jordan, Utah

1 OF 1



# EASY FIT COMPRESSION FITTINGS

PLAN  
PK-100



IF TREE IS PLANTED IN THE PARKSTRIP, SEE DETAIL PK-10 FOR CURBING DETAIL

IF TREE HAS CO-DOMINATE STEM PRUNE ONE OFF

PRUNE BROKEN BRANCHES AT PLANTING W/O LEAVING STUMPS

IF STAKING IS NECESSARY: USE TWO OPPOSING 2" WOODEN STAKES WITH SEPARATE FLEXIBLE TIES. TO ALLOW NORMAL TREE MOVEMENT AND MINIMIZE DAMAGE TO THE TRUNK. STAKES SHALL GO DEEP INTO UNDISTURBED SOIL.

TRUNK FLARE 2" ABOVE GRADE UP TO 4" (10cm) ABOVE GRADE IN POORLY DRAINED SOILS.

REMOVE TRANSIT GUARD, ALL TWINE AND TAGS WHEN PLANTING IS COMPLETE.

2-4" (5-10 cm) LAYER OF MULCH OVER ROOT BALL. KEEP MULCH AWAY FROM ROOT COLLAR.

TWO BUBBLERS PER TREE THAT EMIT 0.5 GALLONS PER HOUR

RAISED RING OF SOIL TO DIRECT WATER INTO ROOT BALL - ESPECIALLY IMPORTANT IF TOP OF ROOT BALL IS RAISED ABOVE GRADE

WIDEN HOLE IF SOIL IS COMPACTED.

CONTAINERIZED TREE SHALL BE ROOT PRUNED AND/OR SCORED TO PREVENT GIRDLING ROOTS

PACK BACKFILL USING NATIVE SOILS AROUND BASE OF ROOT BALL TO STABILIZE; ALLOW REMAINDER OF BACKFILL TO SETTLE NATURALLY, OR TAMP LIGHTLY.

REMOVE ALL (AS MUCH AS POSSIBLE) OF THE WIRE BASKET AND ALL OF THE BURLAP FROM THE ROOT BALL WHEN PLANTING WITHOUT DAMAGING THE ROOT BALL

ROOTBALL ON UNDISTURBED SOIL TO PREVENT SETTLING.

DRAWING UPDATED JULY 2019

CONTAINERS FOR DECIDUOUS TREES IF AVAILABLE ARE PREFERRED

City of West Jordan, Utah

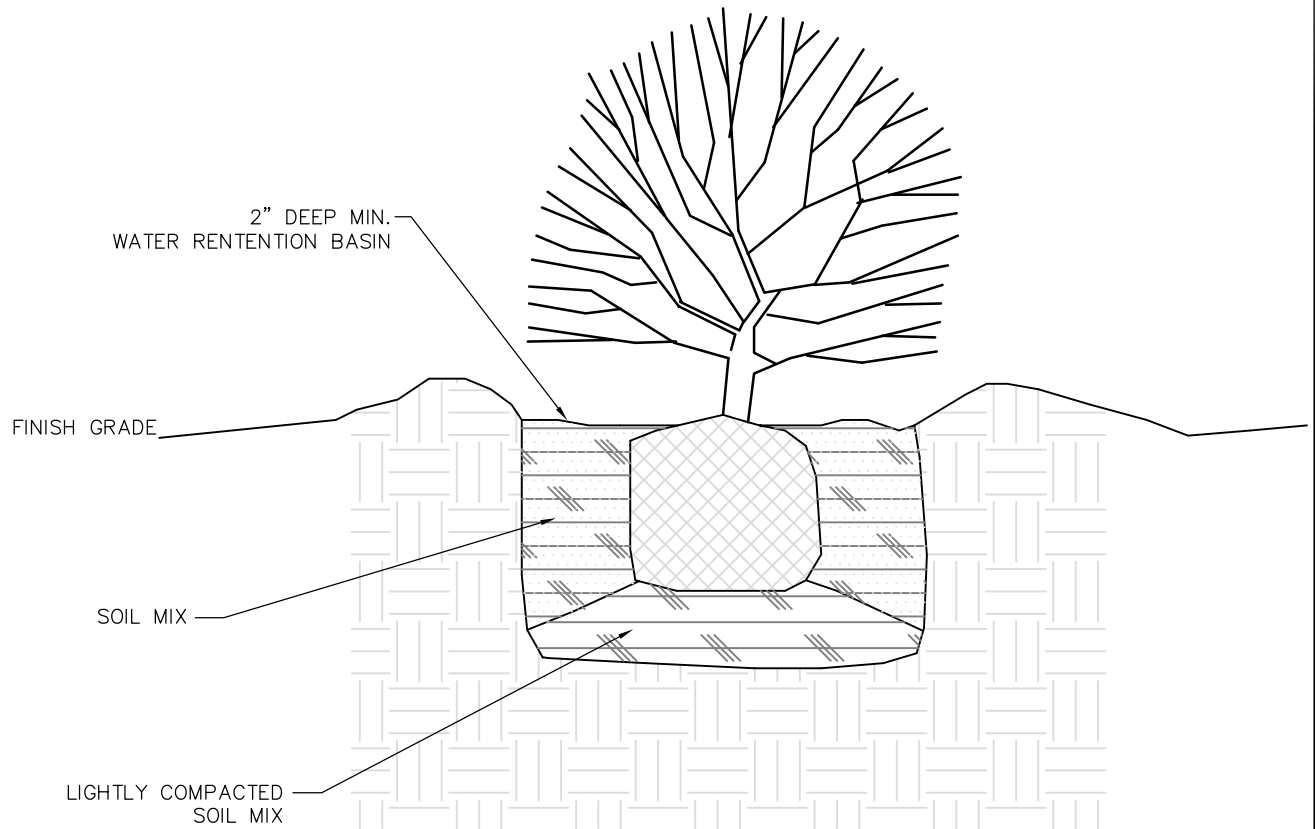
1 OF 1



# TREE PLANTING & STAKING

PLAN  
PK-105

SOIL MIX: for all trees, shrubs and ground cover shall be 30% existing soil excavated from plant hole, 30% imported loamy topsoil, 20% clean coarse sand and 20% peat moss.



TYPICAL SHRUB PLANTING DEPTH:  
Depth of ball plus 3"

TYPICAL SHRUB PLANTING WIDTH:  
Width of ball plus 6"

DRAWING UPDATED JULY 2019

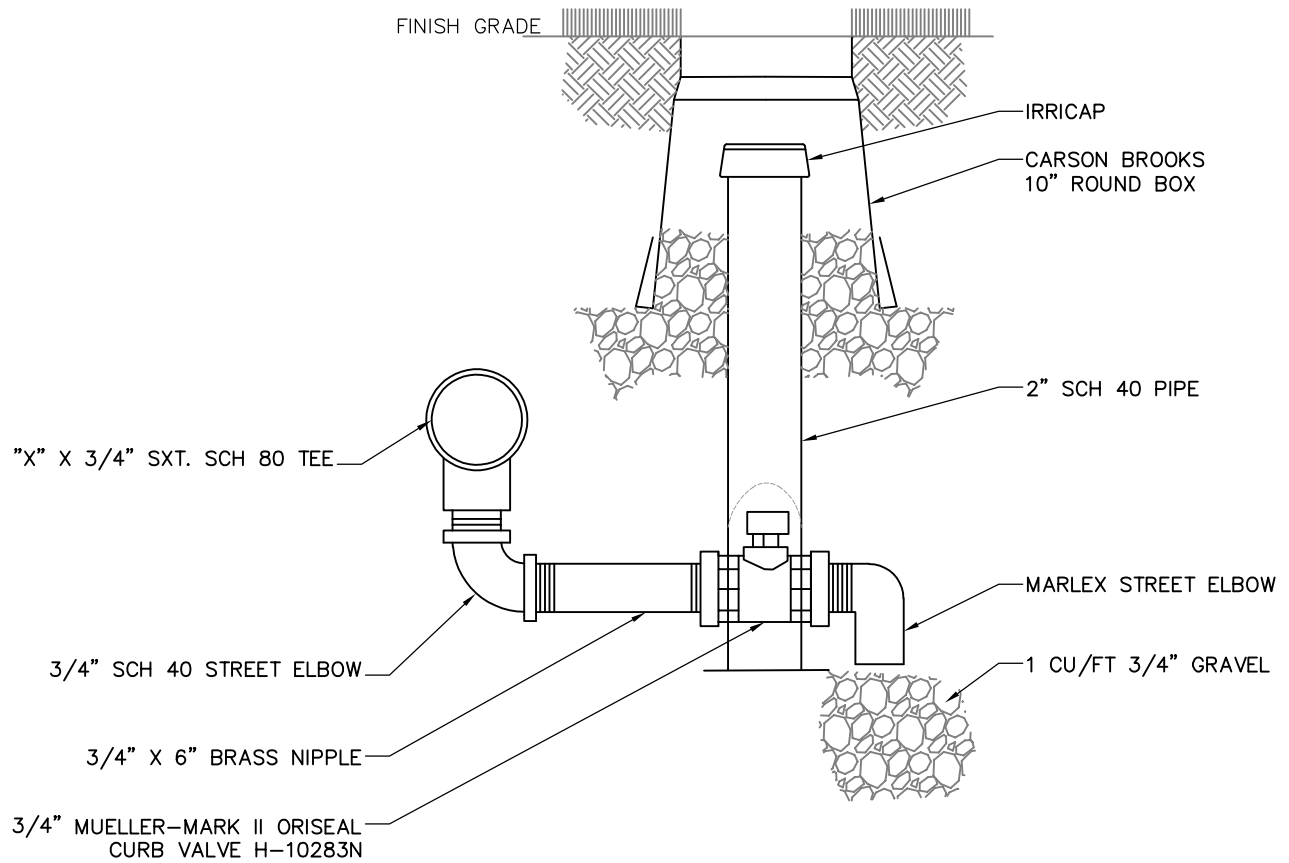
City of West Jordan, Utah

1 OF 1



## SHRUB PLANTING DETAIL

PLAN  
PK-115



DRAWING UPDATED JULY 2019

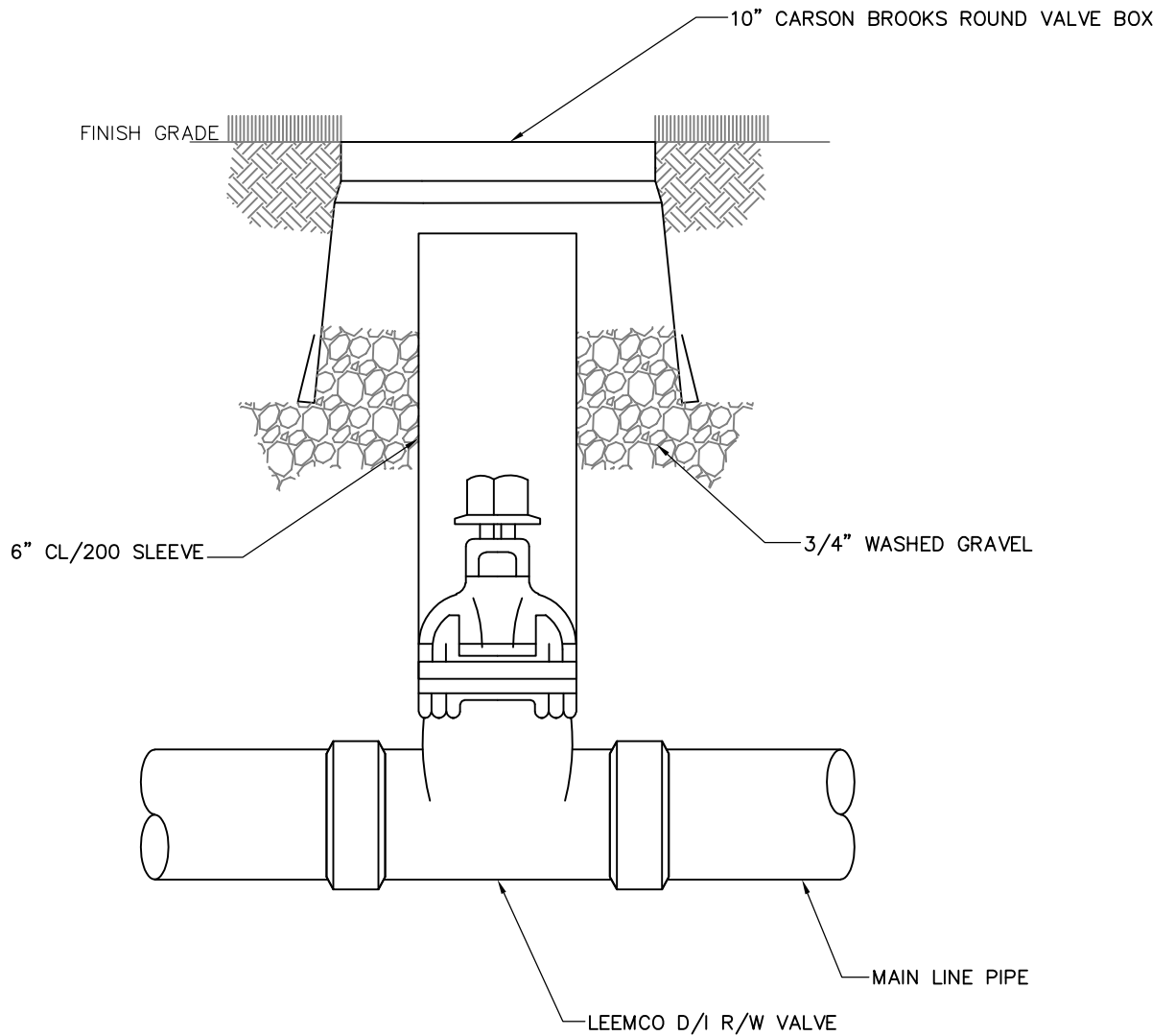
City of West Jordan, Utah

1 OF 1



# MAIN DRAIN VALVE DETAIL

PLAN  
PK-130



DRAWING UPDATED JULY 2019

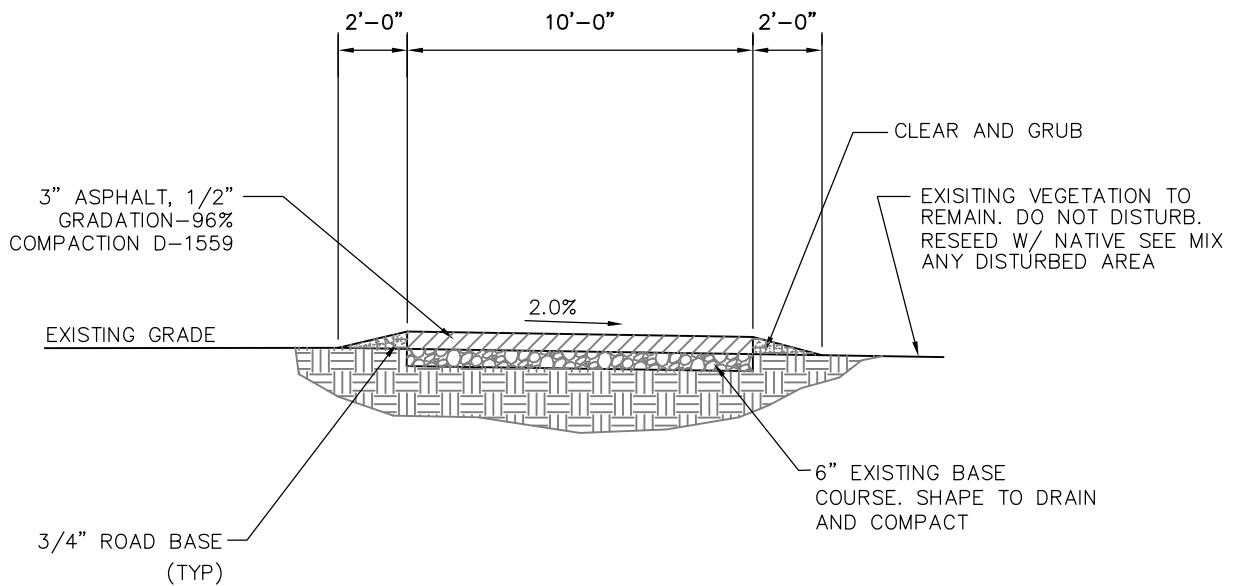
City of West Jordan, Utah

1 OF 1



# ISOLATION VALVE DETAIL

PLAN  
PK-135



NOTE:

EXISTING BASE & NEW SUBGRADE SHALL BE SPRAYED WITH A HIGH POTENCY HERBICIDE SUCH AS PRAMITOL, OR APPROVED EQUAL. APPLICATION SHALL BE PER MANUFACTURERS SPECIFICATIONS.

PAVE EXISTING TRAIL CROSS SECTION

TYP

DRAWING UPDATED JULY 2019

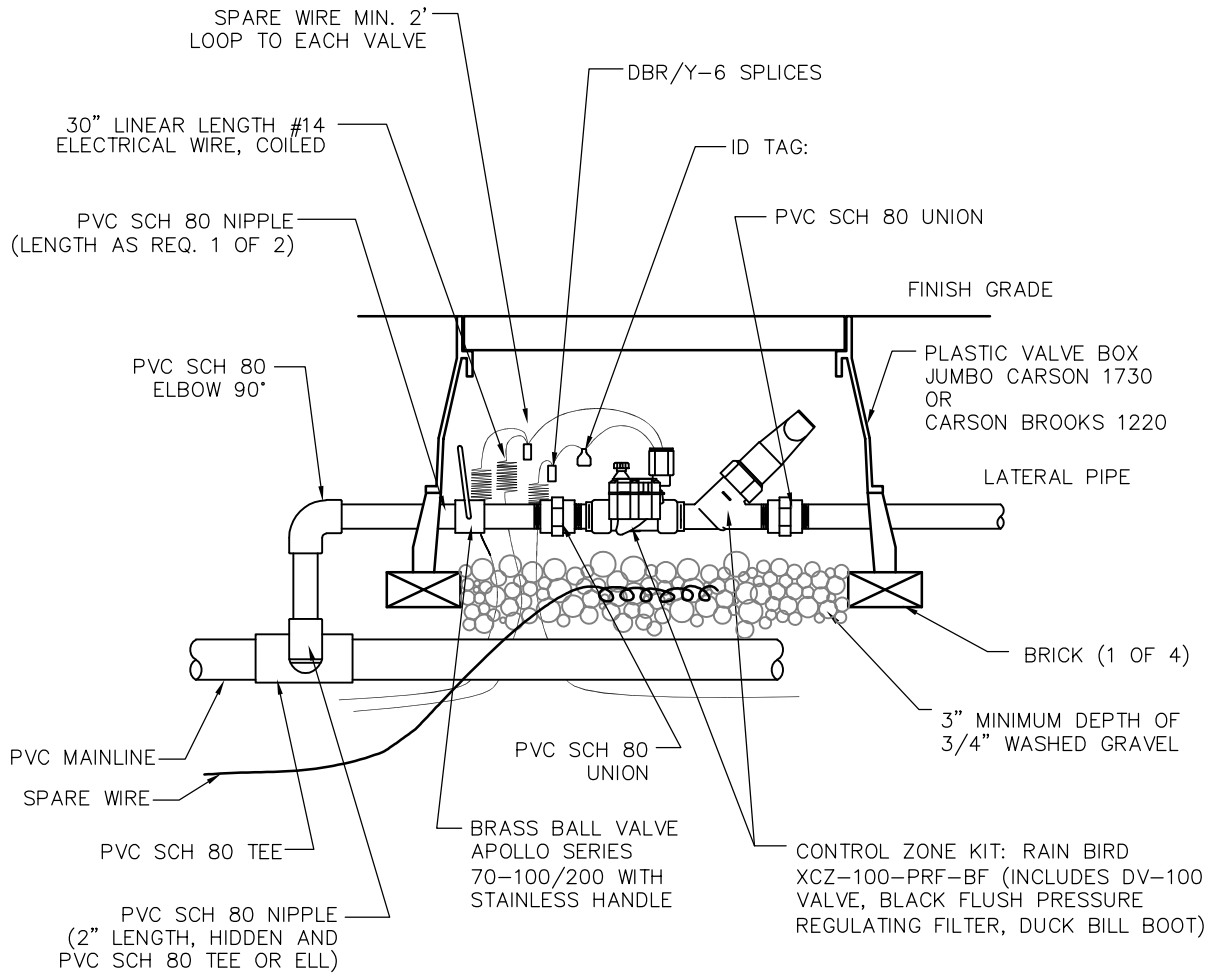
City of West Jordan, Utah

1 OF 1



TRAIL CROSS SECTION

PLAN  
PK-145



DRAWING UPDATED JULY 2019

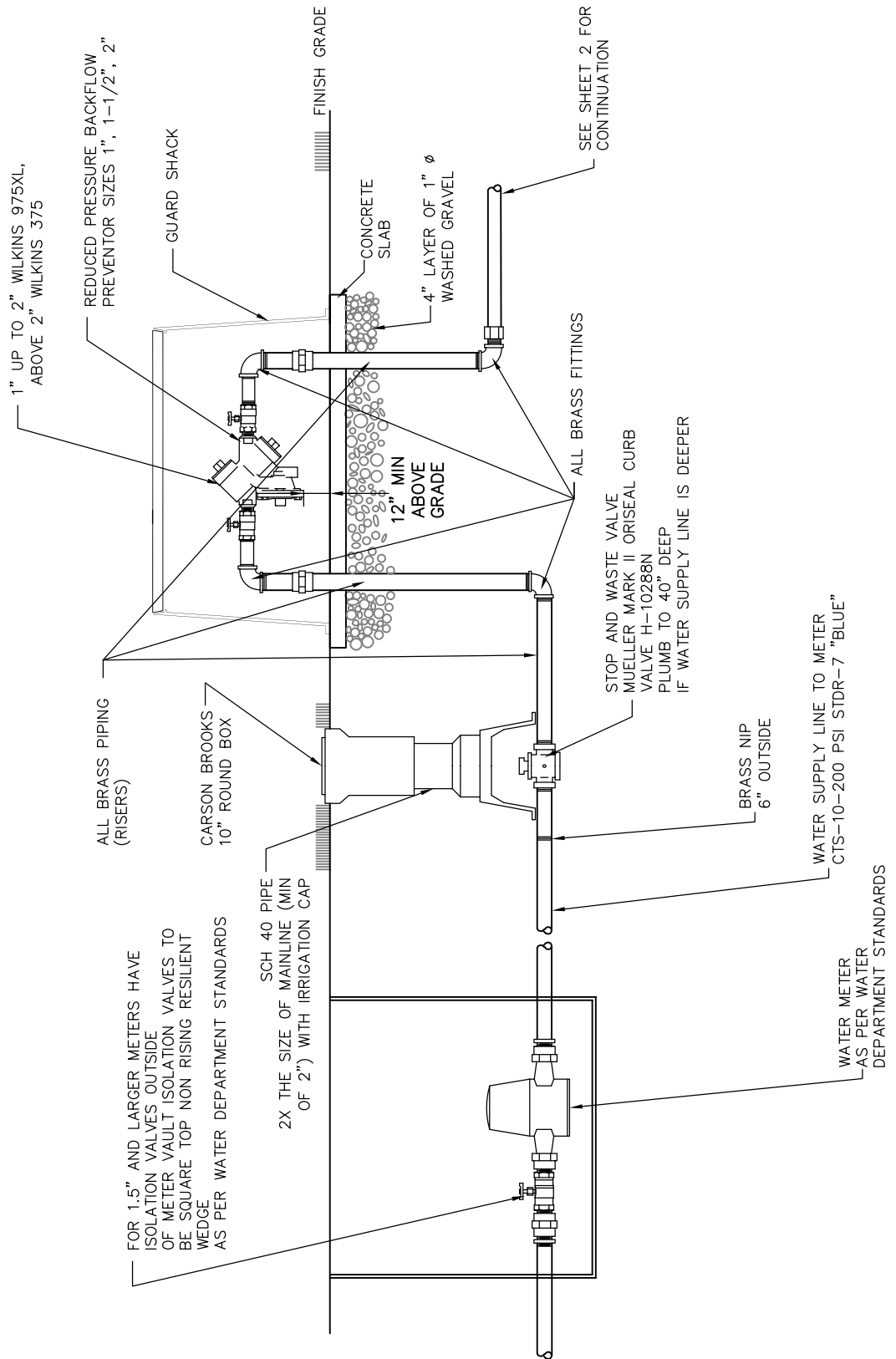
City of West Jordan, Utah

1 OF 1



# 1" CONTROL ZONE KIT W/ PRESSURE REGULATING BLACKFLUSH FILTER

PLAN  
PK-150



DRAWING UPDATED JULY 2019

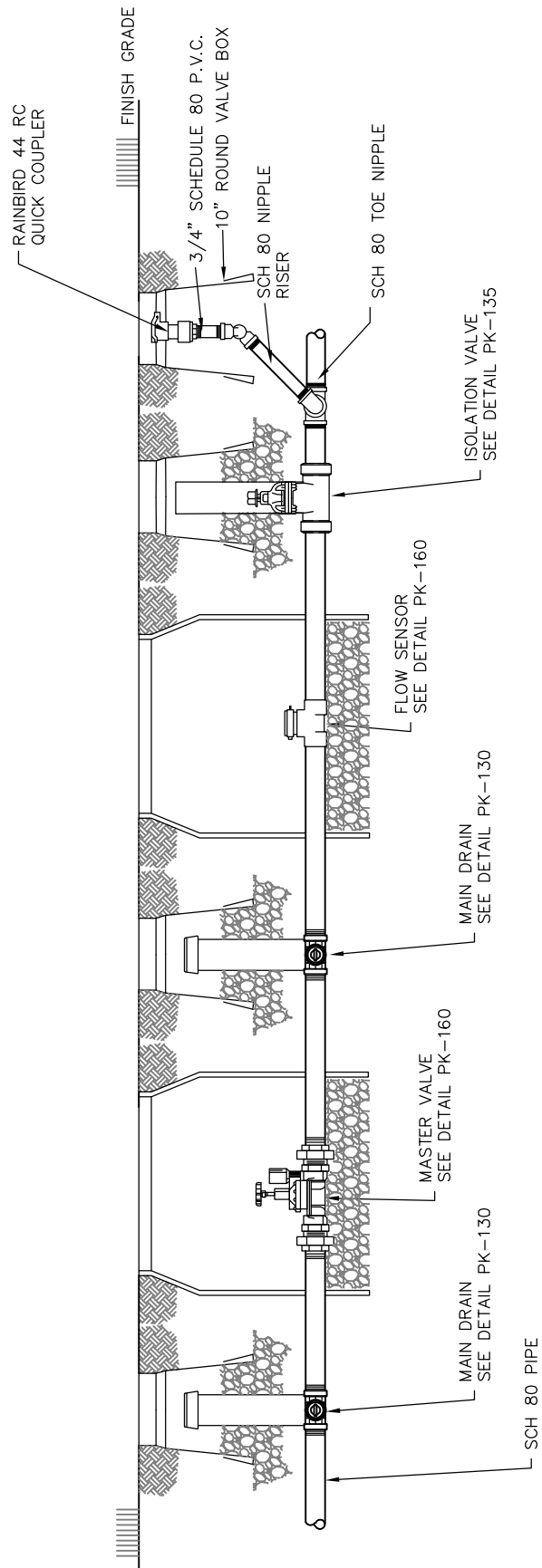
City of West Jordan, Utah

1 OF 2



# PRESSURE REDUCER BACKFLOW PREVENER

PLAN  
PK-155



DRAWING UPDATED JULY 2019

City of West Jordan, Utah

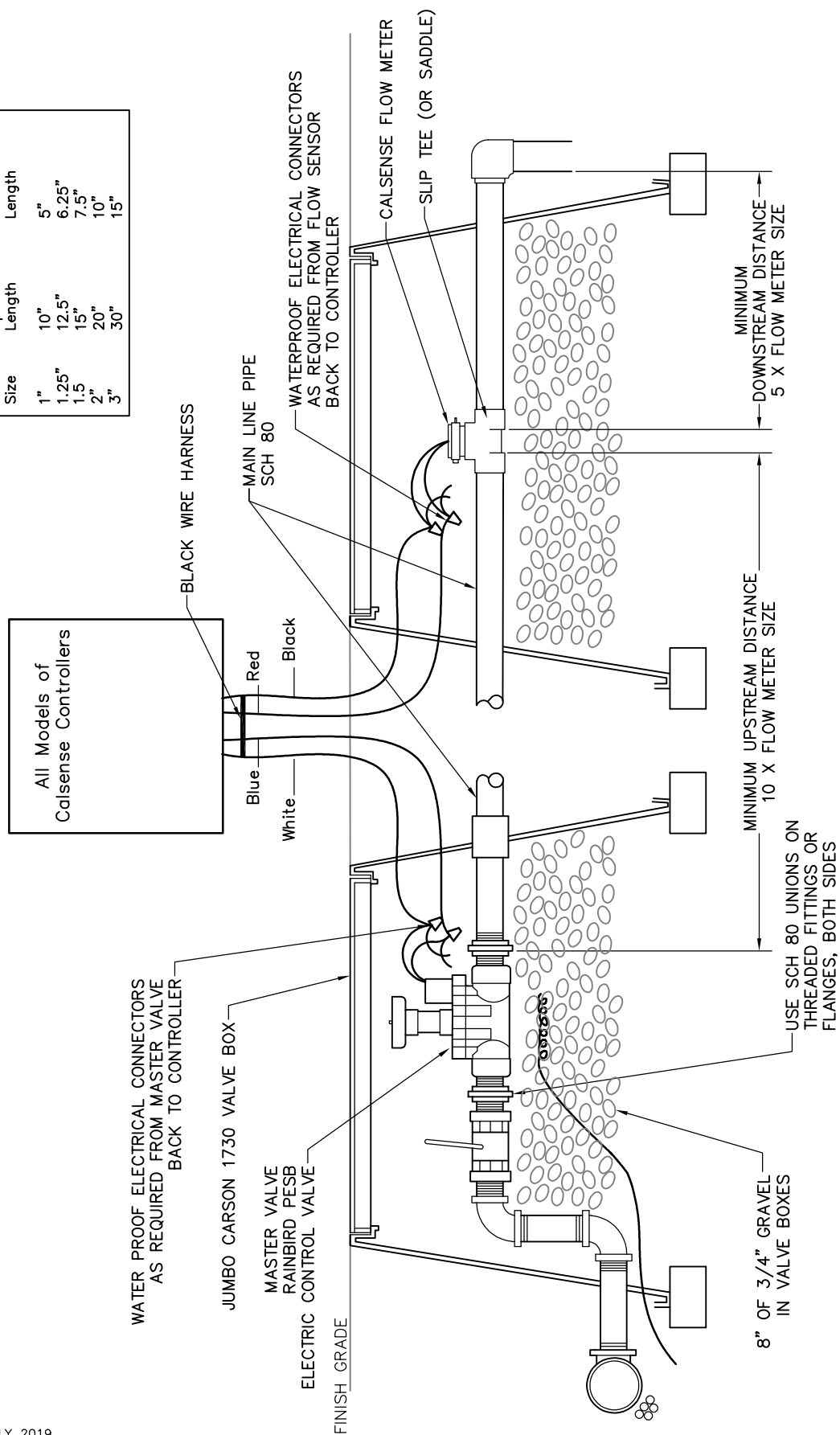
2 OF 2



# PRESSURE REDUCER BACKFLOW PREVENER

PLAN  
PK-155

Pipe Sizing Chart		
F.M. Size	Upstream Length	Downstream Length
1"	10"	5"
1.25"	12.5"	6.25"
1.5"	15"	7.5"
2"	20"	10"
3"	30"	15"



DRAWING UPDATED JULY 2019

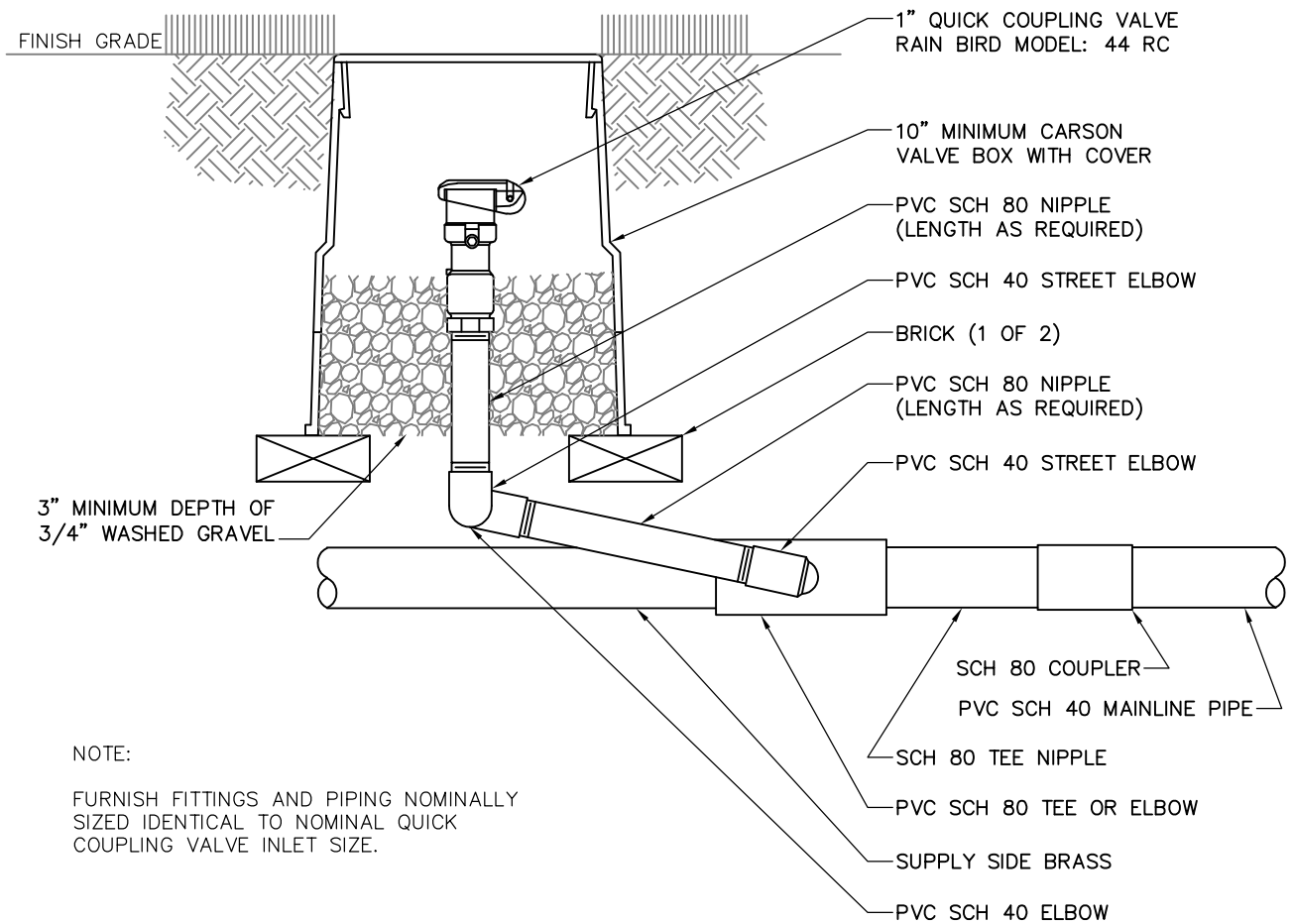
City of West Jordan, Utah

1 OF 1



# MASTER VALVE - FLOW METER DETAIL (CALSENSE FLOW METER INSTALLATION)

PLAN  
PK-160



DRAWING UPDATED JULY 2019

City of West Jordan, Utah

1 OF 1



# QUICK COUPLER DETAIL

PLAN  
PK-170